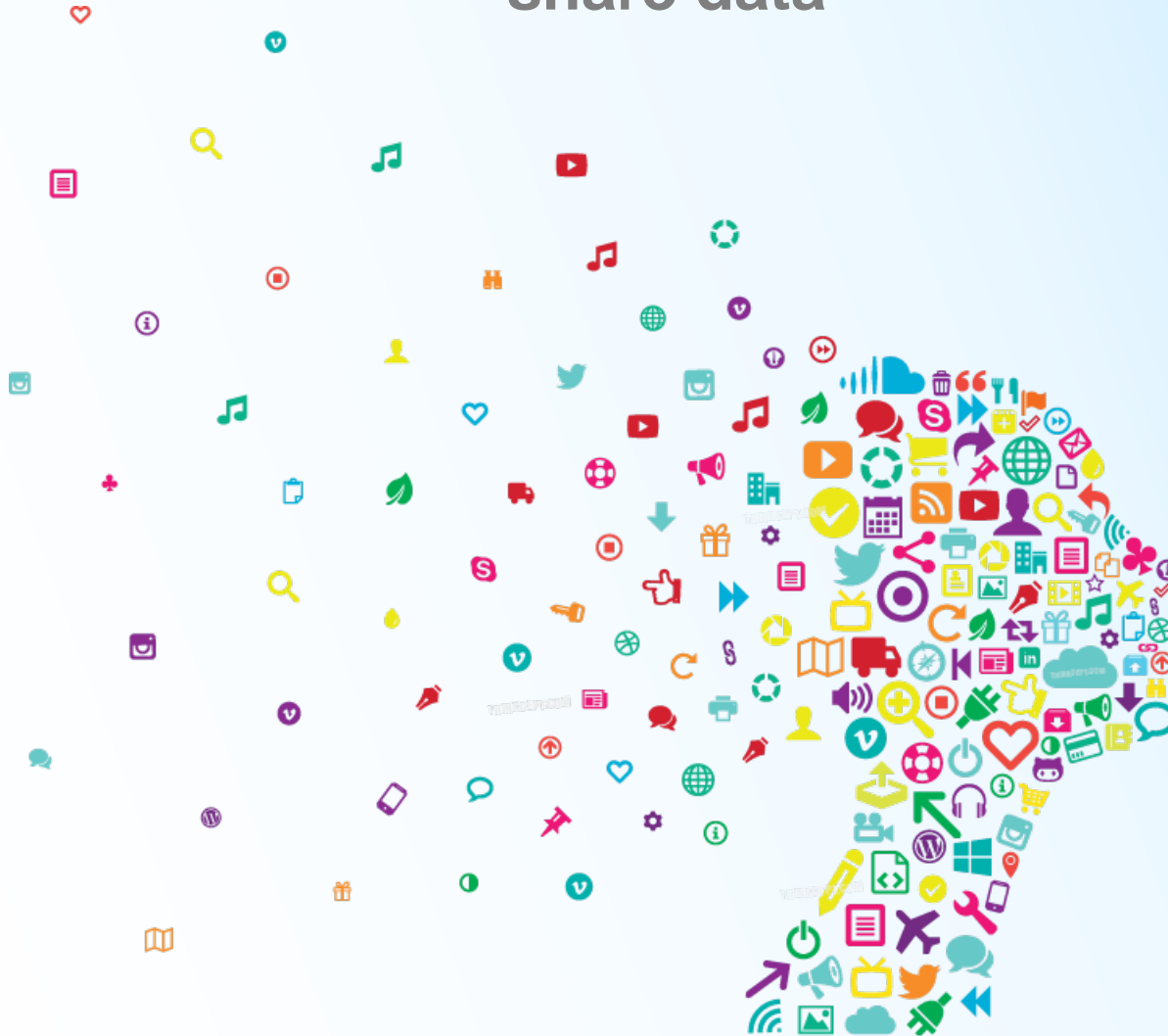


BEYOND REPORTS

A forum to explore how to communicate and share data



BEYOND REPORTS

Explore how to communicate and share data



Welcome
Glad you're here!

BEYOND REPORTS

Explore how to communicate and share data

Overview

- Data and reports are everywhere.
- Gaining easy access to the information and making sense of it can be challenging for organizations and citizens.
- How can we change this?



BEYOND REPORTS

Explore how to communicate and share data

Purpose of today

- Learn what communities are doing to share and display their data.
- Discuss how we can move beyond reports.
- Identify key features we need for our community.
- Network and make connections.



BEYOND REPORTS

Explore how to communicate and share data

Agenda (Page 5)

- Key note address - Richard Pietro
- Lunch
- Panel discussion – 4 speakers
- Break and visit displays
- Group discussions
- Wrap up key note address – Kevin Tuer
- Closing comments



BEYOND REPORTS

Explore how to communicate and share data

Hosted by



Data Networking Group

Waterloo Social Data
Consortium

Wellbeing Waterloo Region



BEYOND REPORTS

Explore how to communicate and share data

Introductory comments

Mike Murray

Chief Administrative Officer

Region of Waterloo

Wellbeing Waterloo Region Backbone

Margaret Parkin

Manager of Planning Information & Research

Chair of the Data Networking Group



Wellbeing Waterloo Region

- Waterloo Region has a number of programs and collaboratives that have made significant progress towards community wellbeing.
- But there are some people who are not experiencing wellbeing.
- Community leaders wanted to change this so that everyone thrives and no one is left behind.

Wellbeing Waterloo Region



- Is a community lead initiative made up of citizens, service providers, community organizations, government, business etc.
- Working together to identify focus areas.
- Create significant and impactful solutions to improve wellbeing in our community.
- Where do we focus to move the needle on wellbeing?

Focus defined by data & input

- The focus needs to be informed by public input and data.
- Implemented both qualitative and quantitative methods.
- Engaged the community in conversations to identify needs.
- Conducted focused outreach with groups harder to reach.
- Identified indicators to measure wellbeing.

Community conversations

QUALITATIVE

- Met with collaboratives
- Community conversations
- Community forums
- Online input platform
- Displays and input at various community events
- Key informant interviews
- Capacity building sessions
- Surveys
- Scan of existing research conducted by partners



Profile of Wellbeing

QUANTITATIVE

- Chose the Canadian Index of Wellbeing for the measurement framework.
- Measurement and monitoring working group worked with CIW and identified 194 indicators.
- 70 indicators are included in the Profile of Wellbeing report.
- Need expressed to move beyond a report.
- Share and communicate data to engage and inform our coordinated planning.
- One of the reasons for holding this forum.

Draft focus areas identified

BIG IDEAS

- Based on the data and community input draft focus areas were identified:
 - Affordable Housing
 - Healthy Child Development
 - Social Inclusion
 - Connected community – working better together!

Draft - Emerging Strategy



Next steps

- Gather input on the emerging strategy
- Identify collective actions to make impact in the focus areas
- Work with existing collaboratives to identify needs for community support
- Identify a structure that strengthens individual and network connections to break down siloes, leverage local assets and mobilize for collective action.

Get involved!

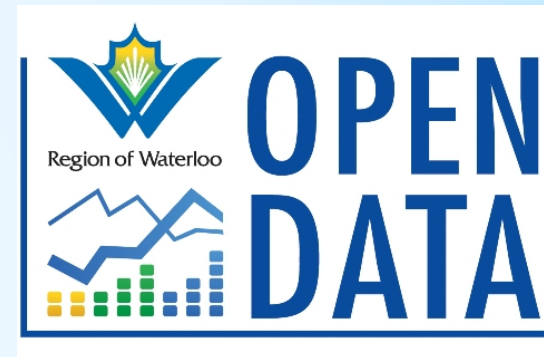
- Everyone can contribute to making a difference in wellbeing for our community.
- If you would like information on how you can participate go to:
www.wellbeingwaterloo.ca
- Visit the table during the break.

BEYOND REPORTS

Explore how to communicate and share data



Data Networking Group



Waterloo Social Data Consortium



The Community Data Program is an initiative of the Canadian Council on Social Development

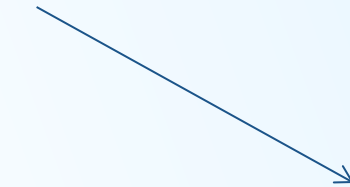
Wellbeing Waterloo Region

monitoring and measurement group

BEYOND REPORTS

Explore how to communicate and share data

Data



Indicators



Report

!Data

Open data

Applications Dashboards

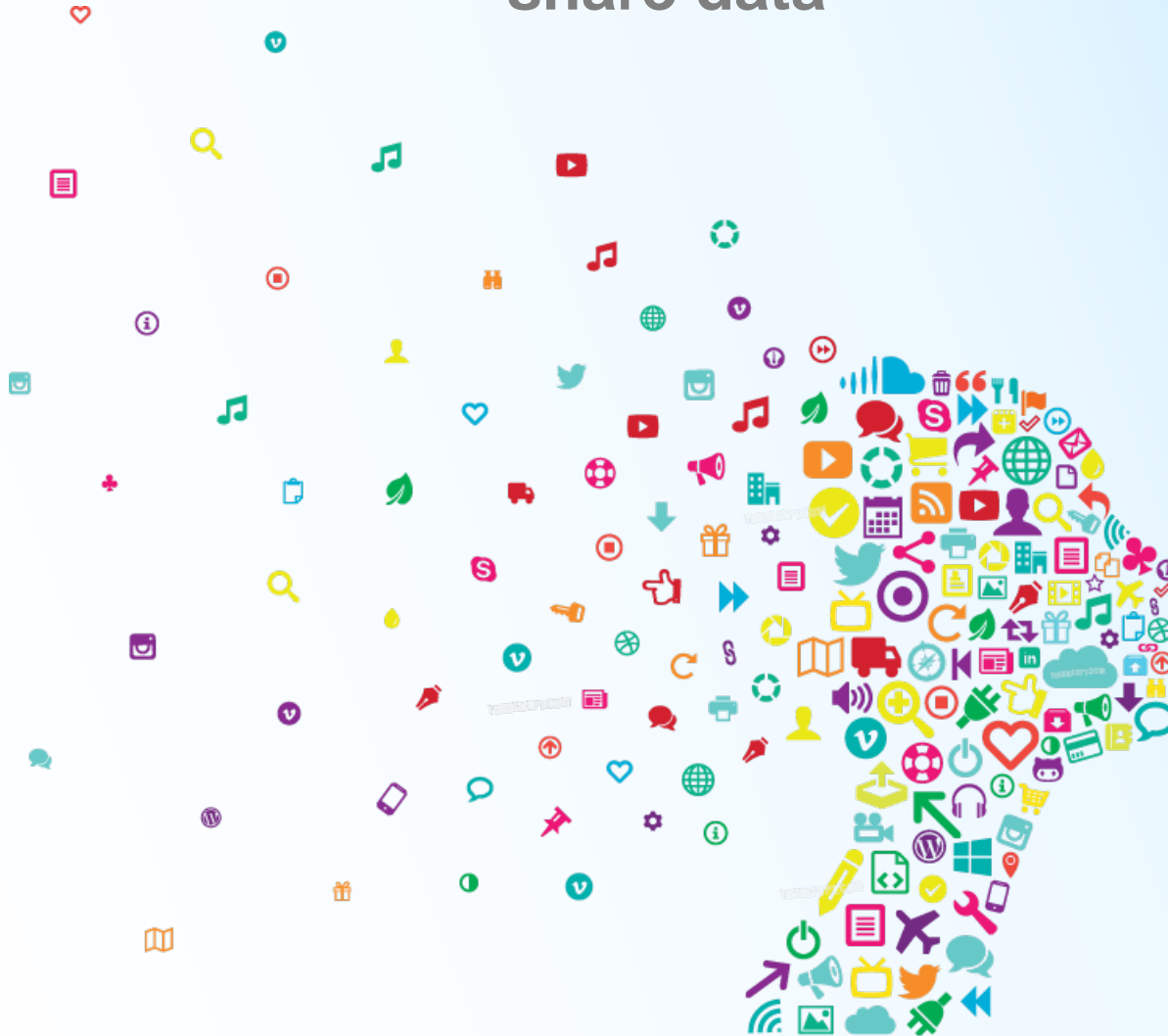
Analysis Mapping

Knowledge mobilization



BEYOND REPORTS

A forum to explore how to communicate and share data



BEYOND REPORTS

Explore how to communicate and share data

Work mats

- As you hear presentations write down your comments and questions.
- We will collect worksheets at the end of day.
- We will use the information to inform the potential next steps.



Beyond Reports
A Forum to Explore Ways of
Communicating & Sharing Data
Data and reports are everywhere but gaining easy access to the information
and making sense of it can be challenging for organizations and citizens.

Based on what you know and what you saw today ...

What key features would you like to see in order to improve access to data and information?

What would be most useful to you and your organization?

How can we successfully embed a 'data sharing mindset' into our community culture?

What other questions or comments do you have?

Please leave worksheets on your table following the forum. We will compile the results and put them on the www.WelcomeinWRS.ca website in the New Year.

BEYOND REPORTS

Explore how to communicate and share data

Keynote



Join at
slido.com
#1428



@richardpietr

**“Art is a personal
act of courage.**

**Something one
human does that
creates change in
another.”**

-Seth Godin



Toronto Open Data Book Club

20
JUL

Thursday, July 20, 2017, 6:00 PM

Open Data Book Club - Toronto Lobbyist Registry



Hosted by [Richard Pietro](#)

On Thursday, July 20, Toronto will hold its 24th Open Data Book Club... an idea borrowed from Open Data Ottawa. This concept is the same as a regular book club, but instead of discussing books, we discuss an Open Data Set from either the Municipal, Provincial, or Federal levels of government. The City of Toronto already has an online tool to lookup lobbyists in Toronto (click here (<http://www1.toronto.ca/wps/portal>



You + 27 went

Copy



toronto reference library

789 Yonge Street · Toronto, ON



11 comments

15
JUN

Thursday, June 15, 2017, 6:00 PM

Open Data Book Club - Employment Ontario



Hosted by [Richard Pietro](#)

On Thursday, June 15, Toronto will hold its 23rd Open Data Book Club (<http://opendatabook.club/>)... an idea borrowed from Open Data Ottawa (<https://youtu.be/5DiBSloGRlO?t=3h15m36s>). This concept is the same as a regular book club, but instead of discussing books, we discuss an Open Data Set from either the Municipal, Provincial, or Federal levels of government. This month's we are looking at the following Employment



You + 52 went

Copy



toronto reference library

789 Yonge Street · Toronto, ON



21 comments

Toronto Open Data Book Club Example #1

Ontario Green House Gas Emissions Open Data Set

BPS Energy Consumption - Three Stories

101 College Street (the MaRS Discovery District building, which is listed as a hospital)

2011 Normalized eWh/HDD/ft^2 = 30.1

2012 Normalized eWh/HDD/ft^2 = 10.1

	Organization Name	Sector Name	SubSector Name	Operation Name	Operation Type	ZIP/Postal Code	Annual Flow	Average Hours Per Week
2011	Toronto University Health Network	Public Hospital	Acute/Chronic	Toronto Medical Discovery Tower	Facilities used for hospital purposes	M5G 1L7		168
2012	Toronto University Health Network	Hospital	Acute/Chronic	Toronto Medical Discovery Tower	Facilities used for hospital purposes	M5G1L7	168	0

	Fuel Oil 1 & 2	Unit4	Fuel Oil 4 & 6	Unit5	Propane	Unit6	Coal	Unit7
2011								
2012	0	Litre	0	Litre	0	Litre	0	Metric Tonne

	Wood	Unit8	District Heat	Unit9	Emission Factor1	District Cool	Unit10	Emission Factor2
2011			39,297,249.4	metric tonne - steam				
2012	0	Metric Tonne	30,551.5	Metric Tonne	0	0	Giga Joule	0

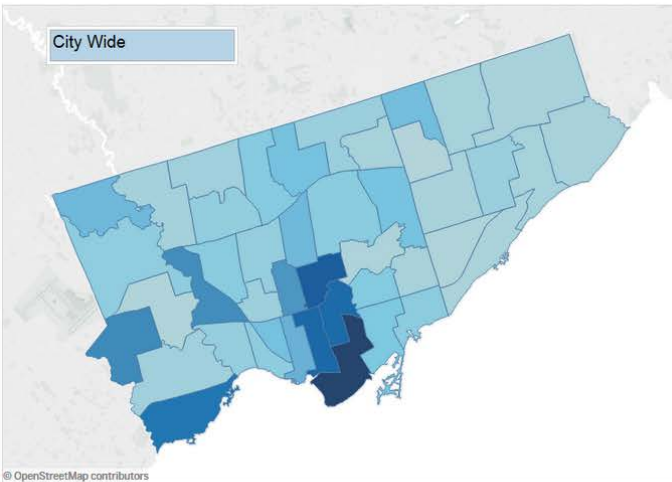
	Swimming Pool	Number of Portables	GHG Emissions(Kg)	Energy Intensity (GJ/Mega Litres)	Energy Intensity (ekWh/sqft)	Energy Intensity (GJ/m2)	Energy Intensity (ekWh/Mega Litres)
2011	FALSE		5,452,488,648		67,378.6	2,611.0	
2012	0	FALSE	6,993,140.6	126.5	0		

Toronto Capital Budget & Plan by Ward 2014-2023

\$3,198,714,000

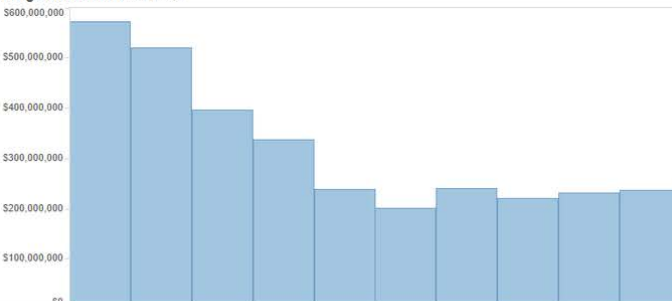
Approved

Staff Recommended



© OpenStreetMap contributors

Budget Allocation Over Time

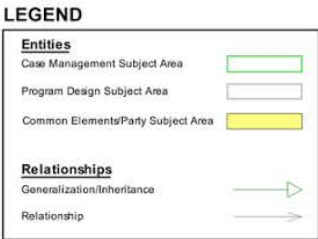


ward ^ v Highlight All Match Case Whole Words 1 of 1 match

SubProject Name	Ward/Project N..	
HARRIS FILTERS REHABILITATION	WAT906902-29	\$50,000,000
Work for TTC & Others - Future 2014-2023	TRN025 -10	\$50,000,000
Consolidated Data Centre	ITP906883-30	\$57,532,000
	ITP906883-55	(\$8,475,000)
Legion Road Extension Grade Separation	TRN907838-1	\$45,000,000
SEWER REHABILITATION	WAS906958-9	\$45,000,000
Structural Maint & Tech (2015-2023)	TPA907877-1	\$45,000,000
Kipling Acres 145 bed construction (Phase 3)	HOM907695-2	\$42,000,000
	HOM907695-5	\$2,500,000
Redevelopment of St. Lawrence Market North	FAC907554-2	\$40,125,000
71 Front W-Union Station SOGR Projects	FAC906394-301	\$40,000,000
Don & Waterfront Trunk/CSO CONS - BEYOND 2..	WAS907559-8	\$40,000,000
SEWER SYSTEM INSPECTION - 10 YR FOREC..	WAS906495-18	\$40,000,000
TRUNK SEWER REPLACEMENT-FORECAST	WAS000259-36	\$40,000,000
Servers 2014-2023 program (S5)	POL906583-3	\$38,887,000
Radio Replacement (2016-2020)	POL907734-1	\$36,523,000
Finishes - SOGR	TTC000310-5	\$36,000,000
CP 15 Redevelopment (JV)	TPA907611-1	\$32,000,000
St Clair West/MetroInx Georgetown	TRN907839-1	\$32,000,000
BIA Streetscape Improvement Program (2015-20..	EDV906517-1	\$31,176,000
JOS - GERRARD ST WM - CONSTRUCTION	WAT906749-4	\$30,185,000
NEW SERVICE CONNECTIONS - CUT REPAIR..	WAT906935-15	\$28,000,000
Additional Funding for North West PATH	UNS907229-27	\$26,000,000
Vehicle/Equipment Purchase - 2018	FLT000475-20	\$100,000

[illegible]

Ontario Ministry of Housing – Open Data in Reverse



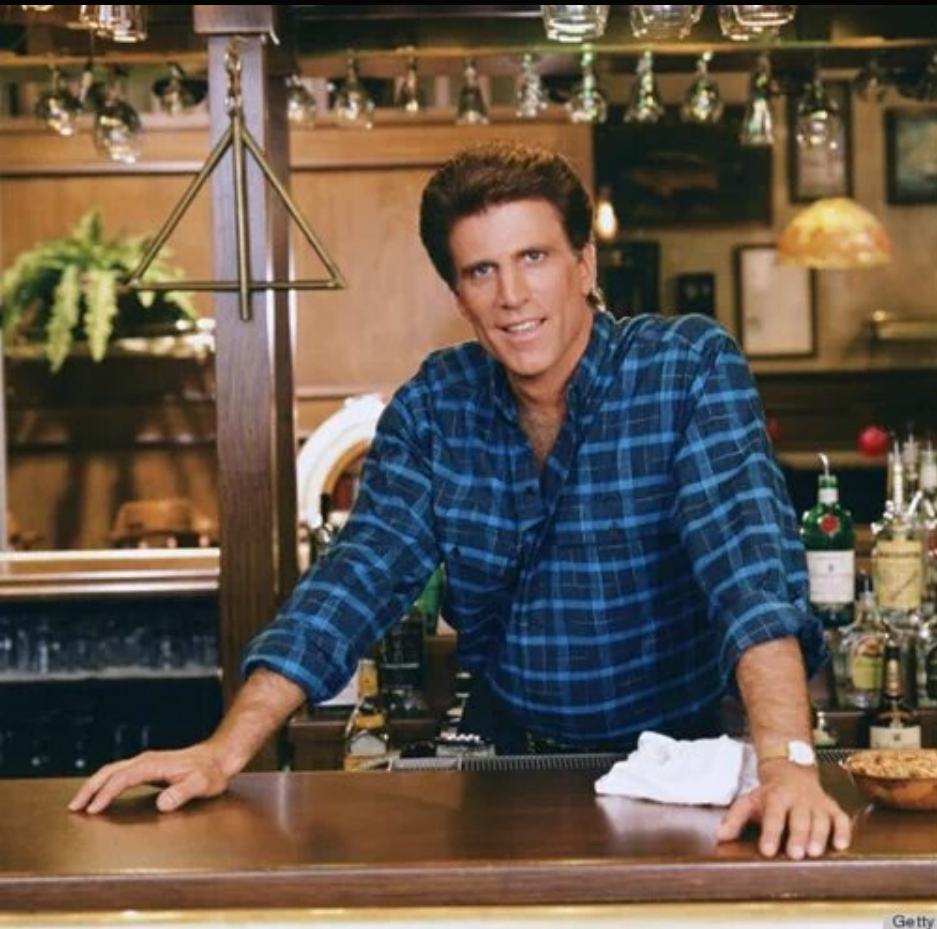


@richardpietr

Join at
slido.com
#1428



@richardpietr



An XLS file, a CSV file, and a PDF file walk into a bar. The bartender asks, "What will it be?"

The XLS file says "Give me the ingredients for a Martini. That way I can add features to them and sell it back to people outside at a premium."

The CSV file says "Give me the ingredients for a Martini. That way I can create my own version of the drink."

The PDF file say "I want something I can look at, but not drink."

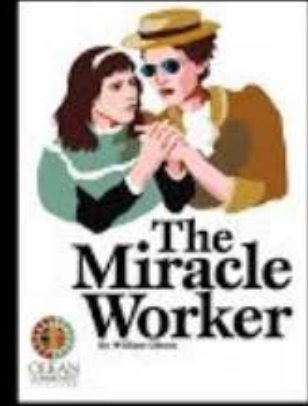
Public Servants who work on Open Government & Open Data



What unengaged citizens
think I do



What trolls think I do



What engaged citizens
think I do



What other public
servants think I do



What I think I do



What I really do

THE CANADIAN BOW TIE

Open Government Tour 2014





Video #2

My Einstein Job

Sidebar ▾ | Home Principles for Leading an Open Life About me

Part 6 - Analysis of Toronto's Open Government Progress Report 1

Part 5 - Analysis of Toronto's Open Government Progress Report 1

PART 4 - Analysis of Toronto's Open Government Progress Report 1

PART 3 - Analysis of Toronto's Open Government Progress Report 1

PART 2 - Analysis of Toronto's Open Government Progress Report 1

PART 1 - Analysis of Toronto's Open Government Progress Report 1

Toronto and its Open Data Watermark 1

The Director's Cut: Open Government Progress Report 1

Open Government is Trending 1

Top 10 Excuses to NOT Open Data 2

JUL

8

PART 1 - Analysis of Toronto's Open Government Progress Report



(Above: Wordle of Toronto's Open Government Progress Report)

“They know the words, but they don’t know the music.” - Jimmy Hoffa, 1992 Hoffa, Twentieth Century Fox



We can't control
change.

But one thing we can
control is our response
to change.

Rob Meikle, Chief Information Officer, City of Toronto

Video #3

Join at
slido.com
#1428



@richardpietr

Basic Three-Act Structure

Act #1

Act #2

Act #3

Climax

Introduction

- Slido
- Civic Engagement as Art
- ODBC Demos

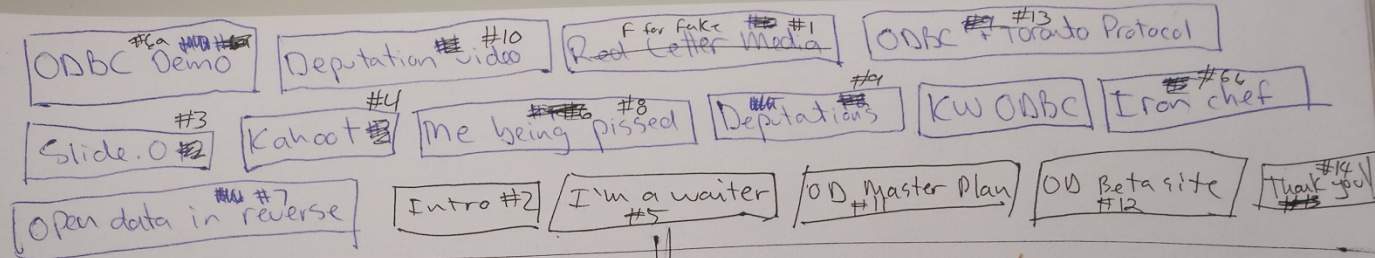
Rising Tension

- No one is listening
- Make it personal
- Deputations
- OpenGov Progress Report

Resolution

- Something changed
- New staff
- Open Data Master Plan
- Say Thank You

Beyond The Presentation



- #1 => F is for Fake (3.5)
 #2 => Intro
 ↳ why did we just watch this?
 #3 => Memshare, back at the ranch
 ↳ Explain slides/Kahoot
 #4 ↳ Ask a question right there. ↳

- #5 I'm a waiter
 ↳ A little about me
 ↳ get a pic
 ↳ Explain ODBC

- #6a ODBC Demo + Iron chef
 ↳ budget
 ↳ wellbeing
 ↳ Greenhouse as

- #7 OD in reverse
 ↳ Show Database
 ↳ Explain process
 ↳ Award

#city hall selfie

- #8 => Pissed
 ↳ Ready to leave
 ↳ Doing deputations
 ↳ Dep videos

- #11 => OD master Plan
 ↳ New wines
 ↳ New approaches

- #12 => OD Beta site
 #13 => ODBC integration

- #14 => Thank you
 ↳ Kahoot
 ↳ GOT Rawin Music

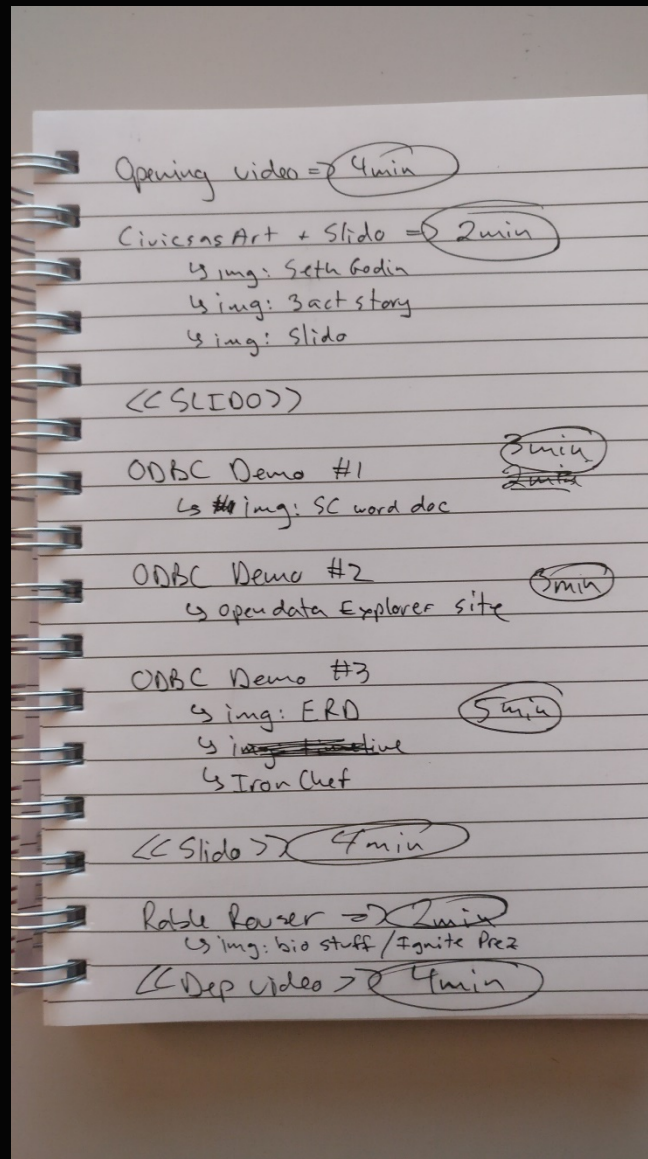
- # List of vids
 3.5 ↳ F is Fake
 4 ↳ Deputation
 2 ↳ Beta Site
 2 ↳ TY

↓
 2 min
 40-12 = 28 min

800-959-8281
 465 1072

4-393-3934
 1800 465 1072

Beyond The Presentation



Video #4

Beyond **The** Presentation

BEYOND REPORTS

Explore how to communicate and share data

Lunch – Communities of interest

- During lunch have conversation with your colleagues on the topic theme.
- Host has some questions to start your conversation.
- Informal conversations with no tangible outcome except to meet one another and have an interesting lunch talk.



BEYOND REPORTS

Explore how to communicate and share data

Lunch – Communities of interest

- Introduce yourselves.
- share why you are interested in the topic.
- What are some of your experiences with regards to the topic?
- How do you think this topic is relevant to moving beyond reports in Waterloo Region?
- What are some of the challenges with regards to this topic?



BEYOND REPORTS

Explore how to communicate and share data

Lunch time

Please recycle and use green bin!



Panel Discussion



Harvey Low
Wellbeing Toronto
Toronto Progress
Portal
City of Toronto

Ron Jaros
Peel Data Centre
Region of Peel



Jennifer Temmer
Peg Winnipeg
IISD's SDG
Knowledge Program



Ryan Erb
My Perth-Huron
United Way



Panel Discussion



Harvey Low
Wellbeing Toronto
Toronto Progress
Portal
City of Toronto

BEYOND REPORTS



COMMUNICATING & SHARING DATA

Harvey Low, City of Toronto

Wellbeing Waterloo Forum - December 8, 2017

TODAY'S TOP DATA CHALLENGES & SOLUTIONS

1. COMPLEX ISSUES

- ✓ CROSS-SILO REPORTING (*"Integrated Analytics"*)

2. DIVERSE USER NEEDS

- ✓ INTUITIVE SELF-SERVICE TOOLS

3. MAKING SENSE OF DATA (What's the story?)

- ✓ *"OPEN ANALYSES"* vs. OPEN DATA

4. DATA INTEGRATION

- ✓ FILE LINKING / LEVERAGING TECHNOLOGY

5. GARBAGE IN... GARBAGE OUT

- ✓ CLEARER POLICY CONTEXT

6. CORE DATA STANDARDS

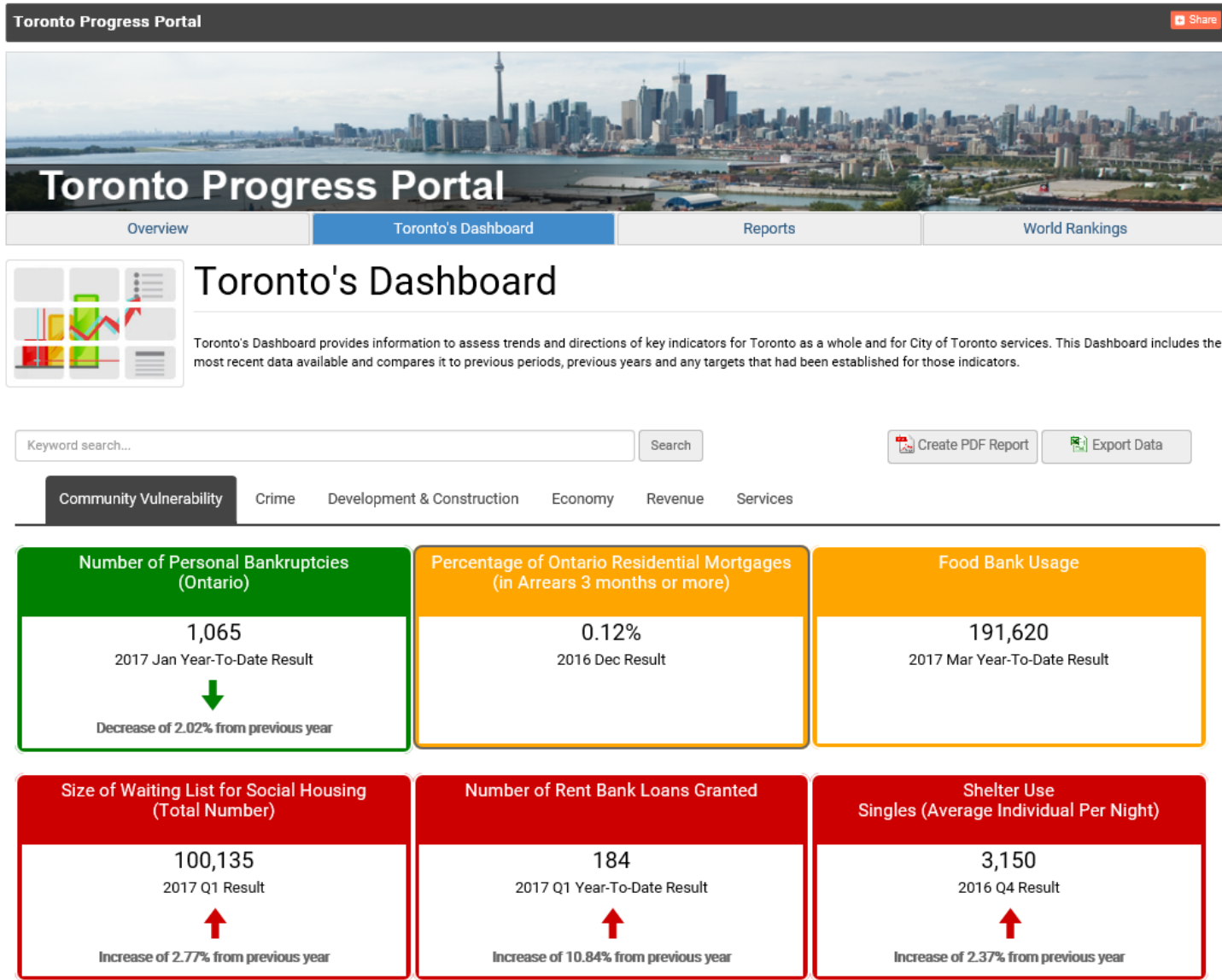
- ✓ COLLABORATE ACROSS PROFESSIONS

TORONTO DATA SHARING EXAMPLES

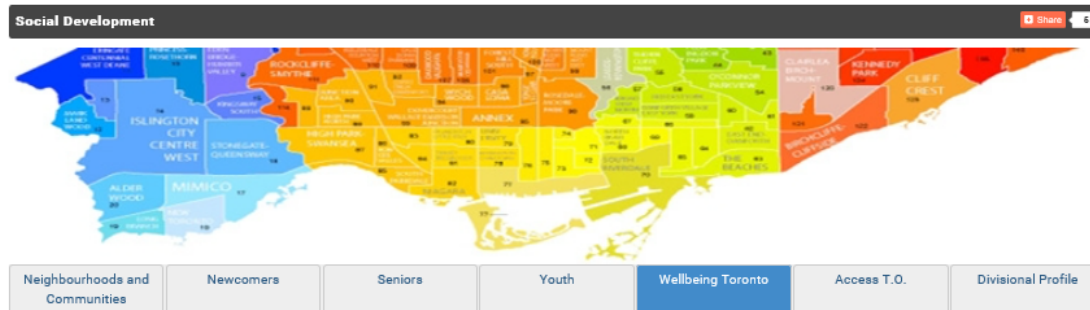
- 1. Toronto Progress Portal**
(City-Level progress indicators)
- 2. Wellbeing Toronto**
(place-Based data visualization tool)
- 3. FindYouthServices**
(sample service finder mapping app)
- 4. Back-Office**
(behind-the-scenes data integration/uploader)

Click on the images or URL in the following slides, to take you to the actual on-line app.

MEASURING PROGRESS



PLACED-BASED PLANNING TOOL



Wellbeing Toronto

Introduction

[Get Started](#)

Wellbeing Toronto is a map visualization tool that helps evaluate community well-being across Toronto's [neighbourhoods](#) on a number of factors, such as crime, transportation and housing. This app allows you to select and combine a number of datasets that reflect neighbourhood wellness and have the results appear instantly on simple maps, tables and graphs. You can also view the location of schools, community centres, police stations and other facilities. Please read the short [tutorial](#) to get a better understanding of how to use the app.



LATEST NEWS

Wellbeing Toronto has added 24 Youth Service Layers to the Reference Layers section. In conjunction with the new [YouthTO Portal](#) this provides a rich understanding of the many services available to youth in Toronto.

Please take a moment to fill out our [Feedback Survey](#). The results will assist in developing version 3.0 of Wellbeing Toronto.

Several experimental applications use Wellbeing Toronto indicators to provide more insight into the underlying data:

- Richard Hydromako's [Cartogram visualization](#) alters the sizes of neighbourhoods to show their weight on certain indicators.
- [Sacha Chua](#)'s visualization of Toronto Public Library language holdings in combination with Wellbeing Toronto data has won the [TPL Open Data Hackathon](#)!
- David Dou's Blog has a [KNIME/Tableau visualization](#) that explains the correlations between different indicators such as [Debt Score vs Low Income](#).

Wellbeing Toronto was last updated on May 8, 2016.

Contact Us

Have a general question about Wellbeing Toronto?

spar@toronto.ca

Harvey Low

Manager, Social Research

Floor 14 East Tower

[100 QUEEN ST W Toronto ON](#)

[M5H 2N1](#)

hlow@toronto.ca

Mat Krepicz

Project Manager

[100 QUEEN ST W Toronto ON](#)

[M5H 2N1](#)

mkrepicz@toronto.ca

Related Information

[About Wellbeing Toronto](#)

What is Wellbeing Toronto and its philosophy?

[Tutorial and Guide](#)

Get to know how Wellbeing Toronto works.

[FAQs](#)

A list of Frequently Asked Questions for your perusal.


[Acknowledgements](#)

Thank you to all our partners.

www.toronto.ca/wellbeing

GETTING PEOPLE TO SERVICES

Youth Share



[Youth Overview](#) [Youth Week](#) [Get Involved](#) [Find Work](#) [Be Healthy](#) [Have Fun](#) [Find Services](#)

Find Youth Services

Search for youth services by key word, topic, language and accessibility. Want to explore services near you? Click on 'Find Me.' Before travelling, please contact the service to make sure it is right for you.

Search

Topic All selected (77) ▾

Language All selected (14) ▾

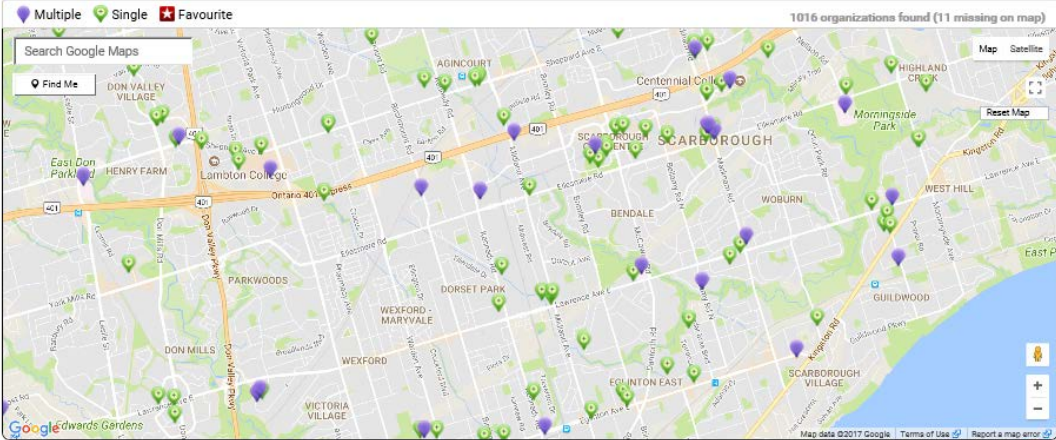
Accessibility All selected (3) ▾

[Map View](#) [List View](#)

[★ Show Only Favourites](#) [Create PDF Report](#)

[Multiple](#) [Single](#) [Favourite](#)

Find Me



This information comes from [211Ontario.ca](#), a project of Findhelp Information Services.

Map data ©2017 Google [Terms of Use](#) [Report a map error](#)

Powered by **211**

211Toronto

Can't find a service? **211** has phone lines available 24/7 to help you find the services you need. Free, Confidential, Live Answer. Dial 2-1-1.

www.toronto.ca/youth (then click Find Services tab)

AUTOMATED DATA LINKING & STANDARDS



SDFA's DASHBOARD ADMINISTRATION

Username: hlow
Access: Read Only

[Login](#)[Dashboard Admin](#)[Administration](#)[Logout](#)

For integer data : e.g. 506,900,000 enter 506900000

[Previous Category](#)

1.260 - Food Bank Usage

[Next Category](#)

Type	Year	Jan	Feb	Mar	Apr	May	Jun	Jul	Aug	Sep	Oct	Nov	Dec
Actual	2016	59,775	60,771	72,329	67,520	68,260	70,720	59,220	68,710	68,420	65,160	71,665	60,650
Actual	2015	55,720	54,290	61,350	61,880	60,280	60,730	60,240	57,440	58,860	64,700	62,200	60,300
Actual	2014	56,300	54,800	59,200	64,000	65,000	58,700	63,420	58,250	61,400	59,600	61,700	54,600
Actual	2013	63,600	57,300	63,700	61,300	63,700	57,100	58,800	58,400	56,700	62,700	57,200	54,500
Actual	2012	69,800	67,700	69,900	64,500	71,000	63,700	65,000	66,000	60,000	66,300	68,400	54,200
Actual	2011	62,000	61,600	68,600	62,400	64,100	64,400	59,100	64,600	67,600	67,700	73,200	68,900
Actual	2010	69,200	71,800	72,700	70,000	67,700	68,300	59,600	60,000	70,000	67,300	70,000	68,600
Actual	2009	64,900	65,800	71,400	72,000	71,600	72,900	76,300	70,000	75,400	77,900	75,000	67,000
Actual	2008	58,786	54,487	58,322	63,400	60,700	58,700	61,300	56,700	60,300	67,500	66,600	61,100
Actual	2007	51,428	48,163	56,092	51,555	57,977	54,200	56,776	58,353	55,238	56,870	59,633	48,756

Type:

Year:

Time Period:

[Previous Period](#)

Value:

[Next Period](#)

Notes:

Internal tool to permit staff to directly update and upload data to the on-line Progress Portal for instant and live changes!

For more information contact:

Harvey Low

Manager – Social Research & Information Mgmt.

City of Toronto

Telephone: 416-392-8660

Email: hlow@toronto.ca



Panel Discussion

Ron Jaros
Peel Data Centre
Region of Peel

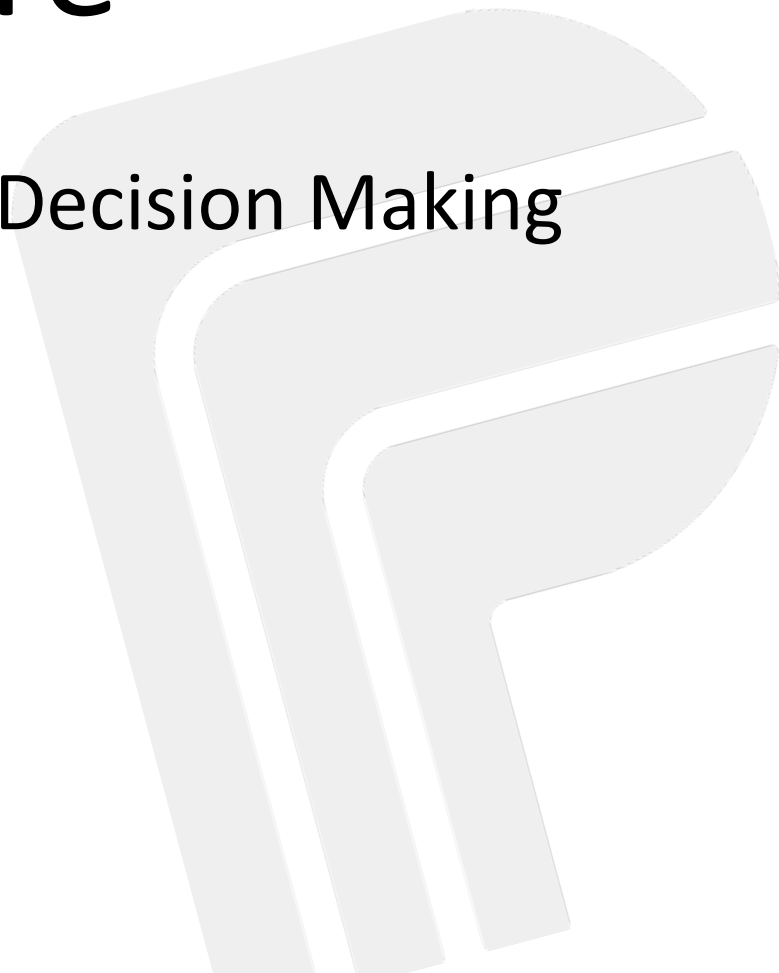


Peel Data Centre

Supporting Evidence Based Decision Making

Ron Jaros
Manager, Peel Data Centre
Region of Peel

December 8, 2017

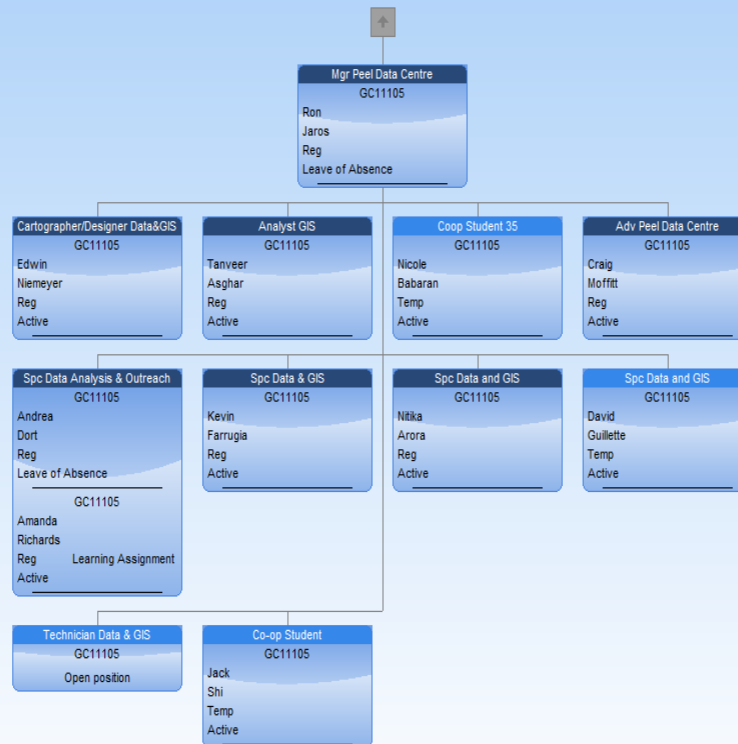


RegionOfPeelOrgChart

Find names, titles, etc. Search 100% Show 2 chart levels

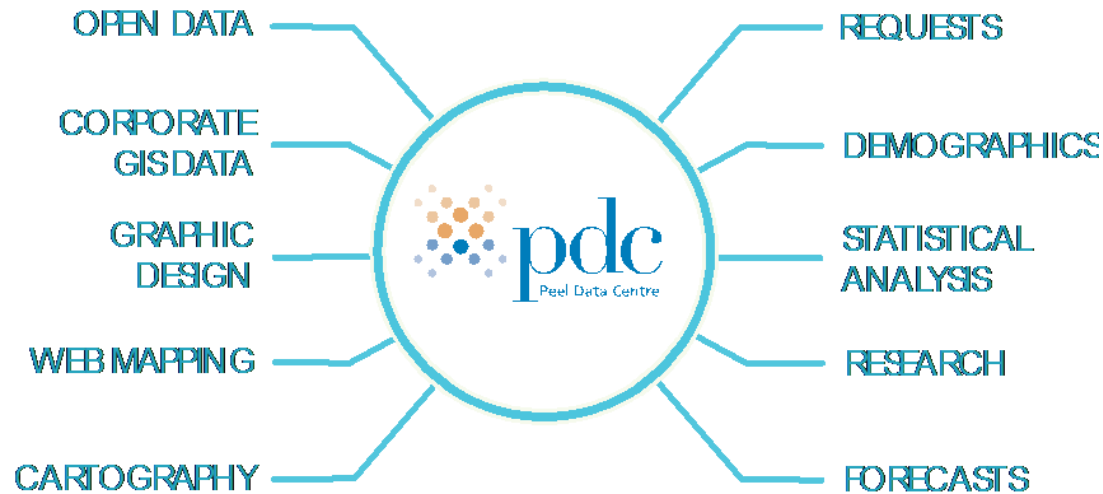
Normal style Filter: Everyone

Mgr Peel Data Centre



What is the Peel Data Centre?

WHAT WE DO



WORKING WITH YOU

Dedicated **PDC** Staff

- Acquire, maintain, analyze, disseminate tabular and spatial data
- Use GIS for spatial data, mapping, analysis
- Support internal and external data users in effective data use
- Support internal and external research initiatives

Who is the **PDC** for?

Everyone.

This includes regional staff, other government organizations, service providers, community organizations, individuals, businesses, etc.

Stakeholders that Benefit from the PDC

- Region of Peel Business Units
- Local Municipalities
 - ▣ City of Mississauga
 - ▣ City of Brampton
 - ▣ Town of Caledon
- Senior Government
 - ▣ Federal and Provincial
- Other Governments and Partner Agencies
 - ▣ Neighboring municipalities, United Way
- General Public
 - ▣ Residents
- Non Profit
 - ▣ Conservation Authorities
 - ▣ Service Providers
 - ▣ Community Groups
- Academia
 - ▣ School Boards and Schools
 - ▣ Researchers and Students
- Media
- Consultants
- Business Sector
 - ▣ Private Businesses
 - ▣ Boards of Trade

How Does the **PDC** Serve these Agencies?

- Dynamic profiles a custom levels of geographies
- Custom data extraction
 - Variables
 - Geography
- Access to current data
- Customized mapping
 - Spatial analysis
 - Thematic mapping
- Community Data Program Consortium Lead

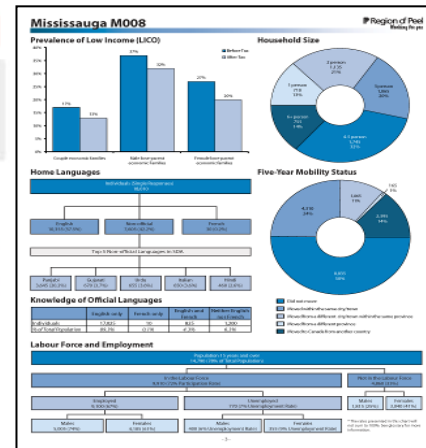
The PDC Delivers...

Website

Open Data

Dynamic Profiles

Fact Sheets



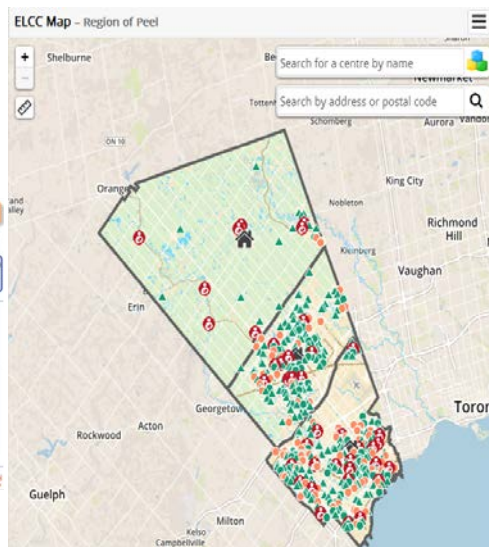
Informative Bulletins

Peel as a Village in 2011

If Peel Region were a village of 100 people, it would look something like this...



Maps



Spatial Data



Data Tables

Total Population by Gender and Age				
	B023	Brampton	Peel	Canada
Total Population	12,550	433,806	1,159,405	31,612,897
Total population age 0-19	3,520	130,100	329,170	7,720,330
Percent of total population	28.0%	30.0%	28.4%	24.4%
Total population age 20-64	8,105	270,015	725,710	19,557,320
Percent of total population	64.6%	62.2%	62.6%	61.9%
Total population age 65 and over	895	33,675	104,530	4,335,250
Percent of total population	7.1%	7.8%	9.0%	13.7%
Total male population	6,280	214,430	570,400	15,475,970
Percent of total population	50.0%	49.4%	49.2%	49.0%
Male population age 0-19	1,840	67,185	169,970	3,952,605
Percent of total population	14.7%	15.0%	14.7%	12.5%
Male population age 20-64	4,010	132,275	363,875	9,636,270
Percent of total population	32.0%	30.5%	30.5%	30.5%
Male population age 65 and over	435	14,960	46,565	1,887,100
Percent of total population	3.5%	3.4%	4.0%	6.0%
Total female population	6,245	219,375	589,010	16,136,930
Percent of total population	49.8%	50.6%	50.8%	51.0%
Female population age 0-19	1,680	62,915	169,200	3,767,725
Percent of total population	13.4%	14.5%	13.7%	11.9%
Female population age 20-64	4,095	137,740	371,835	9,921,050
Percent of total population	32.6%	31.6%	32.1%	31.4%
Female population age 65 and over	460	18,715	67,975	2,448,150
Percent of total population	3.7%	4.3%	5.0%	7.7%

Source: Statistics Canada, 2006 Census
Frequently Asked Questions

Region of Peel
Working for you

A-Z List | Accessible Info | Careers | Contact Us | Print this Page

Search go Programs & Services

News/Notices Regional Government Health Services Public Works Social Services Housing

Planning

About Planning
Open Data Pilot
Regional Official Plan
Research Peel
For Residents
For Business
Your Comments?

Connect **2Peel**
Subscribe to e-Newsletter

pdc
Peel Data Centre

about pdc data open data maps resources contact us

Welcome to the Peel Data Centre. Our Website gives you access to a wide variety of quantitative data on Peel quickly and easily.

| [Planning Home](#) | [About Us](#) |

www.peelregion.ca

Data

Subscribe to PDC
Dataflash!

Statistics, Facts and More

This is the core of the Peel Data Centre Website.

Here you will find a range of information, from the number of seniors living in Peel to how many Peel residents take transit to work.

If you do not find the information you are looking for in our six main categories, try our [Other Resources](#).

Main Categories

Census and National Household Survey (NHS)

- About
- Quick Facts
- Census Data
- NHS Data
- Infographic Bulletins
- Ward Profiles
- Service Delivery Area (SDA) Profiles
- Census Maps
- 2011 PNSG Newcomer Profiles

Population, Household, and Employment Data

- Current Estimates
- Forecasts
- Historical

Health

- Live Births
- Deaths and Mortality Rates
- Health Data Website
- Components of Population Growth

Transportation

- Transportation Tomorrow Survey
- Peel Cordon Count Program
- GO Rail Passenger Survey
- Traffic Count Station Data and Interactive Web Map

Monitoring & Environment

- Regional Official Plan Monitoring Program report

Safety

- Peel Police Crime Mapping

Economic Activity

- Labour Market
- Housing Affordability Thresholds
- Dashboard of Economic Indicators
- Peel's Economic Pulse
- Building Permits
- Housing Starts and Completions
- Vacancy Rates
- 2016 Employment Survey Bulletin

Human Services

- Neighbourhood Information Tool
- Affordable Housing Providers
- Early Learning and Child Care (ELCC) Data and Planning Tools
- Food Programs

Other Resources

Summary Geography Document

Data is often available for many different areas (or geographies). In this section, you can find out what the most common analysis areas look like.

Working for you

[A-Z List](#) | [Accessible Info](#) | [Careers](#) | [Contact Us](#) | [Print this Page](#)

[News/Notices](#) | [Regional Government](#) | [Health Services](#) | [Public Works](#) | [Social Services](#) | [Housing](#)

[about pdc](#) | [data](#) | [open data](#) | [maps](#) | [resources](#) | [contact us](#)

data

[census](#) | [national household survey](#) | [forecasts](#) | [economic activity](#) | [transportation](#) | [monitoring & environment](#)

Peel Data Centre Bulletins and Brochures

Peel Data Centre bulletins are brief summaries of data on Peel. Our [Brochures](#) describe particular data collection and analysis initiatives.

PDC Bulletins are organized into 7 categories:

- [2016 Census](#)
- [2011 Census & National Household Survey \(NHS\)](#)
- [2006 Census](#)
- [2001 Census](#)
- [Housing and Construction Activity](#)
- [Brochures](#)
- [Quality of Life](#)

The bulletins and brochures are in PDF format and require [Adobe Acrobat Reader](#). Please [download](#) this free application if you do not already have it.

If you do not find what you are looking for in this section, try our [Other Resources](#) or [contact us](#) in our Planning department.

Bulletins on the 2016 Census

- [2016 Census: Labour, Education & Mobility \(PDF\)](#)
This bulletin summarizes the 2016 Labour, Education and Mobility data release for Peel Region and the Greater Toronto Area (GTA). In 2016, 67.3% of Peel residents over the age of 15 were in the labour force, with an overall employment rate of 61.8%. Over half of Peel's residents in this age group (54.7%) have a post-secondary certificate, diploma or degree, which is consistent across the GTA.
- [2016 Census: Housing \(PDF\)](#)
This bulletin summarizes the 2016 Housing data release for Peel Region and the Greater Toronto Area (GTA). In 2016, 76.2% of Peel's private dwellings were owned, versus rented, with Caledon having the highest rate of ownership at 90.8%, followed by Brampton at

Planning

- [About Planning](#)
- [Open Data Pilot](#)
- [Regional Official Plan](#)
- [Research Peel](#)
- [For Residents](#)
- [For Business](#)
- [Your Comments?](#)

Subscribe to e-Newsletter

http://www.peelregion.ca/planning/pdc/data/bulletins-brochures.htm#2016census

Pathways Pathways Peel Data Centre - Bulletins...

Page Safety Tools

Bulletins on the 2016 Census

- [2016 Census: Labour, Education & Mobility \(PDF\)](#)

This bulletin summarizes the 2016 Labour, Education and Mobility data release for Peel Region and the Greater Toronto Area (GTA). In 2016, 67.3% of Peel residents over the age of 15 were in the labour force, with an overall employment rate of 61.8%. Over half of Peel's residents in this age group (54.7%) have a post-secondary certificate, diploma or degree, which is consistent across the GTA.
- [2016 Census: Housing \(PDF\)](#)

This bulletin summarizes the 2016 Housing data release for Peel Region and the Greater Toronto Area (GTA). In 2016, 76.2% of Peel's private dwellings were owned, versus rented, with Caledon having the highest rate of ownership at 90.8%, followed by Brampton at 80.0% and Mississauga at 72.3%.
- [2016 Census: Immigration and Ethnic Diversity \(PDF\)](#)

This bulletin summarizes the 2016 Immigration, Ethnocultural Diversity and Aboriginal Peoples data release for Peel Region and the Greater Toronto Area (GTA). In 2016, there were 706,835 immigrants in Peel and 2,799,115 immigrants in the GTA. Peel's residents accounted for 27.6% (854,565) of the GTA's 3,093,945 total visible minority residents.
- [2016 Census: Income \(PDF\)](#)

This bulletin summarizes the 2016 Income data release for Peel Region and the Greater Toronto Area (GTA). In 2015, the median household income in Peel was \$86,233 before-tax and \$75,667 after-tax. The median after-tax income for Peel residents aged 15+ was \$28,405 in 2015.
- [2016 Census: Language \(PDF\)](#)

This bulletin summarizes the 2016 Census Language data release for Peel and the Greater Toronto Area (GTA). In 2016, 89.6% of Peel residents had knowledge of English, compared to 87.9% in the GTA. In Peel, 4.0% of residents had no knowledge of an official language, up slightly from 3.9% in 2011.
- [2016 Census: Families, Households & Marital Status \(PDF\)](#)

This bulletin summarizes the 2016 Families, Households, and Marital Status data release for Peel Region and the Greater Toronto Area (GTA). In 2016, there were 281,410 census families with children in Peel and 1,206,635 census families with children in the GTA, a 5.4% and 4.7% increase, respectively, since 2011. In Peel, 54.4% of people aged 15 and over were married, down from 55.4% in 2011.
- [2016 Census: Agriculture \(PDF\)](#)

This bulletin summarizes the 2016 Census of Agriculture Farm and Food Operator Data release for Peel Region and the Greater Toronto Area (GTA).
- [2016 Census: Age, Sex and Dwelling Types \(PDF\)](#)

This bulletin summarizes the 2016 Census Age, Sex and Dwelling Type data release for Peel and the Greater Toronto Area (GTA). In 2016, 703,040 (50.9%) people in Peel were female and 678,700 (49.1%) were male. The average age in Peel was 38.3, which is the lowest average age in the GTA. In 2016, there were 443,918 private dwellings in Peel and 2,425,003 private dwellings in the GTA, a 6.4% and 7.2% increase, respectively since 2011.
- [2016 Census: Population & Dwelling Counts \(PDF\)](#)

This bulletin summarizes the 2016 Census Population and Dwelling Count data release for Peel and the Greater Toronto Area (GTA). During the five year period between 2011 and 2016, the population of Peel grew from 1,296,809 to 1,381,739, a growth rate of 6.5%. Peel has the second largest population in the GTA, behind Toronto (2,731,571).

100%

FEBRUARY 2017

2016 CENSUS BULLETIN POPULATION & DWELLING COUNTS

This bulletin summarizes the 2016 census population (excluding undercount) and dwelling counts for Peel and the Greater Toronto Area (GTA). Data from the 2016 Census was collected across Canada in May 2016. From 2011 to 2016 the population of the GTA increased by 6.0% to 6.4 million people. **What about Peel?**

Peel's population is
1.38
million
(1,381,739)

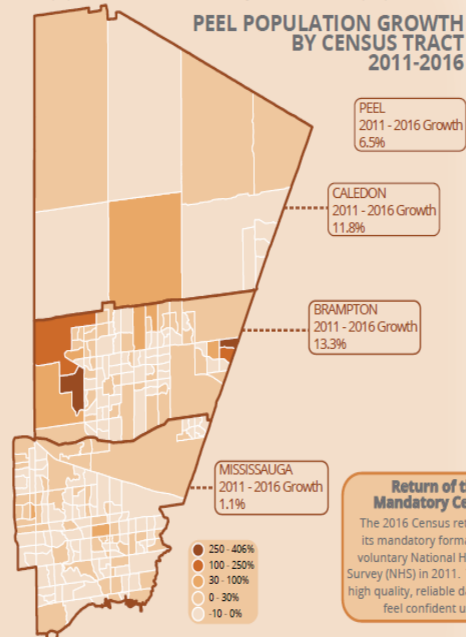
Mississauga has the
6th largest
population
in Canada
(721,599)

Brampton makes up
43%
of Peel's population

Caledon grew by
11.8%

1 in 10
Ontarians live in Peel

PEEL POPULATION GROWTH BY CENSUS TRACT 2011-2016



Return of the Mandatory Census

The 2016 Census returned to its mandatory format after a voluntary National Household Survey (NHS) in 2011. This means high quality, reliable data you can feel confident using.

Peel's Strategic Plan includes 20-year goals with an ultimate vision of creating a Community for Life. Census data from this release is used to inform and achieve our goals of...

"Creating a community where growth is well managed" and
"Prioritizing sustainability and long-term benefits to future generations"

← → http://www.peelregion.ca/planning/pdc/data/ Search...

Pathways Pathways Peel Data Centre - Region o... X

Home Page Safety Tools

Regional Official Plan
Research Peel
For Residents
For Business
Your Comments?

Connect **2** Peel
Subscribe to e-Newsletter

Data

■ **Statistics, Facts and More**

This is the core of the Peel Data Centre Website.

Here you will find a range of information, from the number of seniors living in Peel to how many Peel residents take transit to work.

If you do not find the information you are looking for in our six main categories, try our [Other Resources](#).

■ **Main Categories**

Census and National Household Survey (NHS)

- [About](#)
- [Quick Facts](#)
- [Census Data](#)
- [NHS Data](#)
- [Infographic Bulletins](#)
- [Ward Profiles](#)
- [Service Delivery Area \(SDA\) Profiles](#)
- [Census Maps](#)
- [2011 PNSG Newcomer Profiles](#)

Economic Activity

- [Labour Market](#)
- [Housing Affordability Thresholds](#)
- [Dashboard of Economic Indicators](#)
- [Peel's Economic Pulse](#)
- [Building Permits](#)
- [Housing Starts and Completions](#)
- [Vacancy Rates](#)
- [2016 Employment Survey Bulletin](#)

Human Services

- [Neighbourhood Information Tool](#)
- [Affordable Housing Providers](#)
- [Early Learning and Child Care \(ELCC\) Data and Planning Tools](#)
- [Food Programs](#)

Population, Household, and Employment Data

- [Current Estimates](#)
- [Forecasts](#)
- [Historical](#)

Health

- [Live Births](#)
- [Deaths and Mortality Rates](#)
- [Health Data Website](#)
- [Components of Population Growth](#)

Transportation

- [Transportation Tomorrow Survey](#)
- [Peel Cordon Count Program](#)
- [GO Rail Passenger Survey](#)
- [Traffic Count Station Data and Interactive Web Map](#)

Monitoring & Environment

- [Regional Official Plan Monitoring Program report](#)

Safety

- [Peel Police Crime Mapping](#)

100%

2011 Region of Peel Ward Profiles

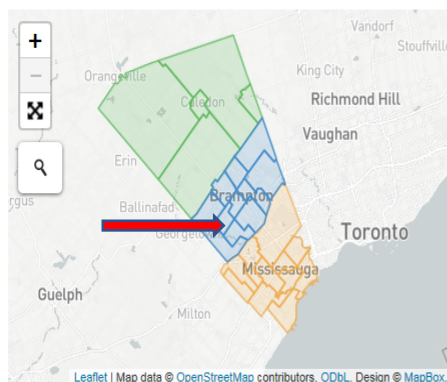
2011 Census and National Household Survey



Ward Profiles

Peel Overview

Ward Profiles



Navigating the Ward Profiles

Select Geographies of Interest

Locate the Ward(s) you are interested in with the map to the left. Use the **+** **-** feature on the map to zoom in and out of the map. Select the Ward(s) by either using the map to click on a ward or by using the dropdown menu below the map. You can select as many geographies as you wish. You can also search for an address or postal code by using the **Q** search tool on the map.

Navigating the Site


Once you select the geographies of interest, the data will be automatically refreshed below. Data is organized into categories (Demographics; Education, Employment & Income; Housing; Ethnicity & Immigration; Language; Transportation) that can be browsed using the tabs above the data. Click on a data category and scroll down to see the data. If you wish to change the geographies at any time, simply scroll up to the dropdown menu and select/delete geographies. For access to the raw data please visit our [Open Data site](#).

Geography

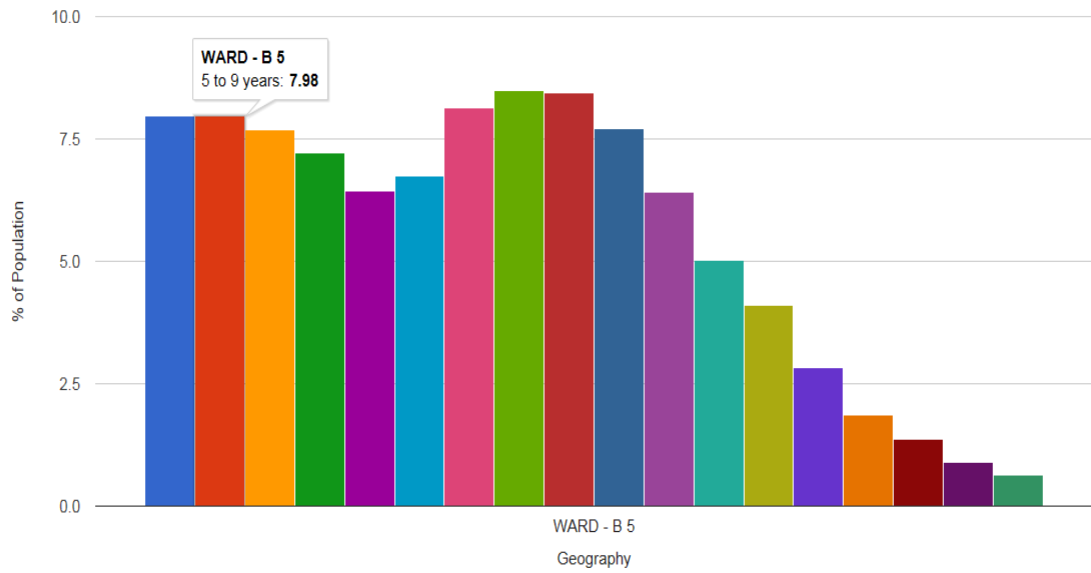
Geography ▲	Total Population
WARD - B 5	42,735

Did you know?

...that Peel has the second highest municipal population in Ontario?



2011 Population by Age Group [Help](#)



Median Age

34.4

We look rather young...

Downloads

Census Bulletins

Print

Feedback

Glossary

Help

2011 Region of Peel Ward Profiles

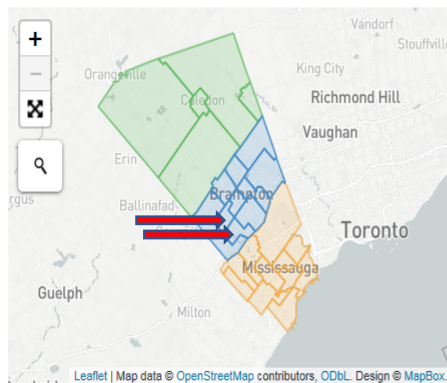
2011 Census and National Household Survey



Ward Profiles


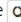
Peel Overview

Ward Profiles



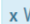
Navigating the Ward Profiles

Select Geographies of Interest

Locate the Ward(s) you are interested in with the map to the left. Use the  feature on the map to zoom in and out of the map. Select the Ward(s) by either using the map to click on a ward or by using the dropdown menu below the map. You can select as many geographies as you wish. You can also search for an address or postal code by using the  search tool on the map.

Navigating the Site

Once you select the geographies of interest, the data will be automatically refreshed below. Data is organized into categories (Demographics; Education, Employment & Income; Housing; Ethnicity & Immigration; Language; Transportation) that can be browsed using the tabs above the data. Click on a data category and scroll down to see the data. If you wish to change the geographies at any time, simply scroll up to the dropdown menu and select/delete geographies. For access to the raw data please visit our [Open Data](#) site.

Geography  Ward

Demographics

Employment & Income

Housing

Ethnicity & Immigration

Language

Transportation

Total Population

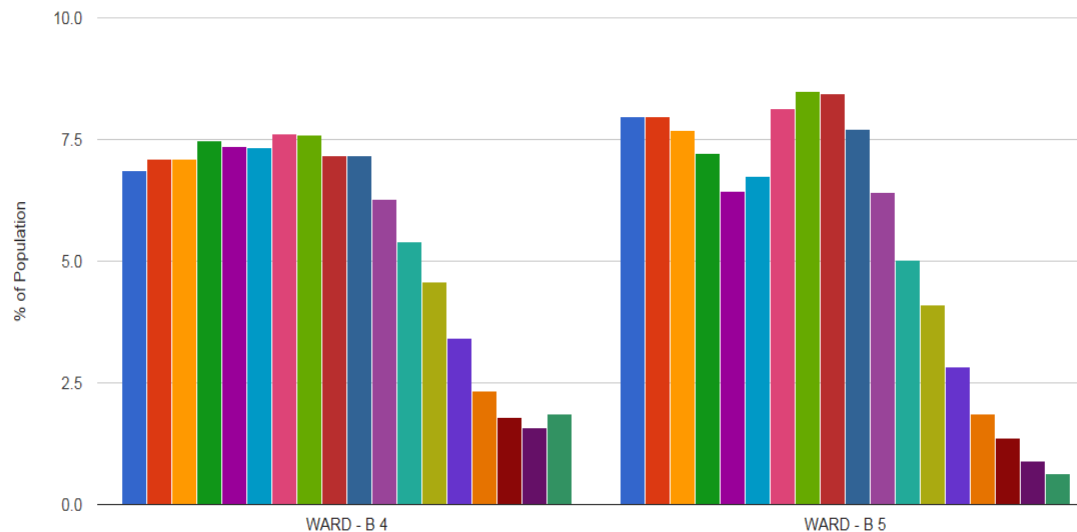
Geography ▲	Total Population
WARD - B 4	49,850
WARD - B 5	42,735

Did you know?

...that Peel has the second highest municipal population in Ontario?



2011 Population by Age Group [Help](#)



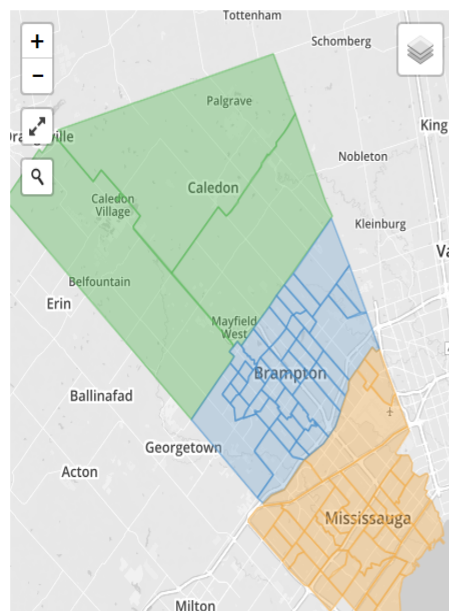
2011 Region of Peel Newcomer Profiles

2011 Census and National Household Survey



Newcomer Profiles

This map depicts the Service Delivery Areas of Peel



Navigating the Newcomer Profiles

Selecting Geographies of Interest

Locate the Service Delivery Area(s) of interest within the map to the left. Use the +/- feature to zoom in and out of the map. Once you identify the geographies of interest, use the dropdown menu below the map to select the geographies. The geography "Peel (Total Population)" represents all residents living in Peel and "Peel (Immigrant Population)" represents any resident living in Peel who has landed in Canada prior to May 10th 2011. The geography "Peel (Newcomer)" and all Service Delivery Areas (SDAs) represent residents in Peel who have landed in Canada between 2006 and 2011. You can select multiple geographies to be displayed at once.

** Please note that SDAs B05 & B40 have been suppressed due to a lack of information and will not appear in the dropdown menu as a selectable SDA. It should also be noted that in certain sections throughout the Newcomer Profile SDAs C0NE, C0SE, and C0W, as well as the geography "Caledon" may not contain information. In cases where there is no data values will appear as a "-1" or "N/A". Please look at our open data tables for the raw data, as well as the overview for more information.*

Navigating the Site

Once you have selected the geographies of interest, the data will be added and automatically refreshed below. The data is organized into categories (Demographics & Ethnicity, Employment & Education, Income & Housing, and Language) and can be browsed using the tab associated with each category. In order to view each data category, click on the data category tab of interest, and then scroll down to see the data. If you wish to change the geographies at any time, simply scroll up to the dropdown menu and select the areas of interest. If you wish to delete geographies, simply scroll to the blue geography tab beside the dropdown menu and click the "x". For access to the raw data please visit our [Open Data](#)

Thank You

Contact info:

Region of Peel

Ron Jaros

ron.jaros@peelregion.ca

www.Peeldatacentre.ca

(905)791-7800 ext. 4356



Panel Discussion



Jennifer Temmer
Peg Winnipeg
IISD's SDG
Knowledge Program

Peg: a community indicator system for Winnipeg

December 2017





***How will we know
if we are making
progress on the
issues important to
us as a community?***







Theme

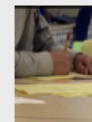
Basic Needs

Basic needs are the things needed for someone to survive including security, shelter, and food as well as access to basic services.

RELATED THEMES & INDICATORS



RELATED CONTENT



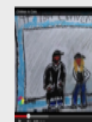
Educational Attainment

▶ Video



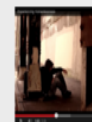
Interview Compilation: Housing

▶ Video



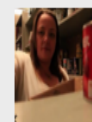
Children in Care

▶ Video



Experiencing Homelessness

▶ Video



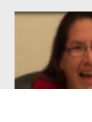
Food Bank Use

▶ Video



Interview on living in poverty:
Valerie

▶ Video



Interview on living in poverty:
miff



Select Region Types ▾

Select Regions (235) ▾

Select Data ▾

Select Visualization Type ▾

Selected Year ▾

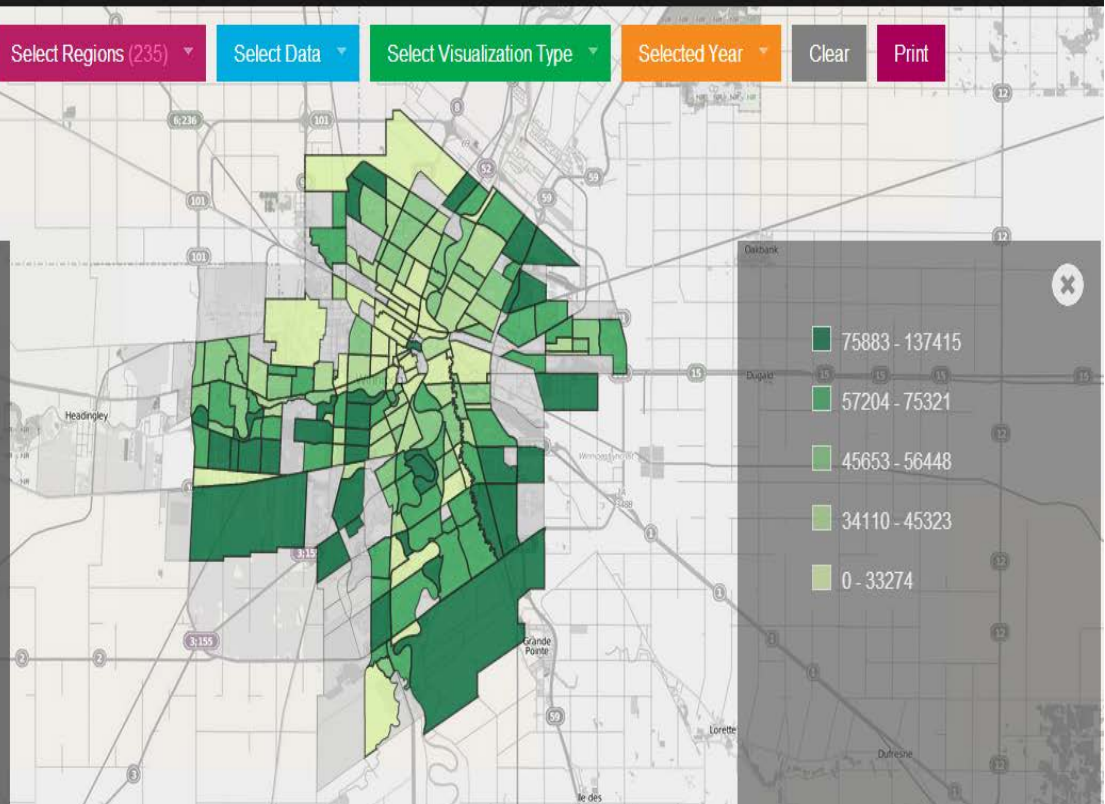
Clear

Print

Household income

Median household income for 2005

Household income refers to the total income (before tax) of all members of a household, defined as a person or a group of persons who live in the same residence. This indicator provides the percentage of households with incomes within increments of \$10,000 ranging from "under \$10,000" to "over \$100,000" per year.

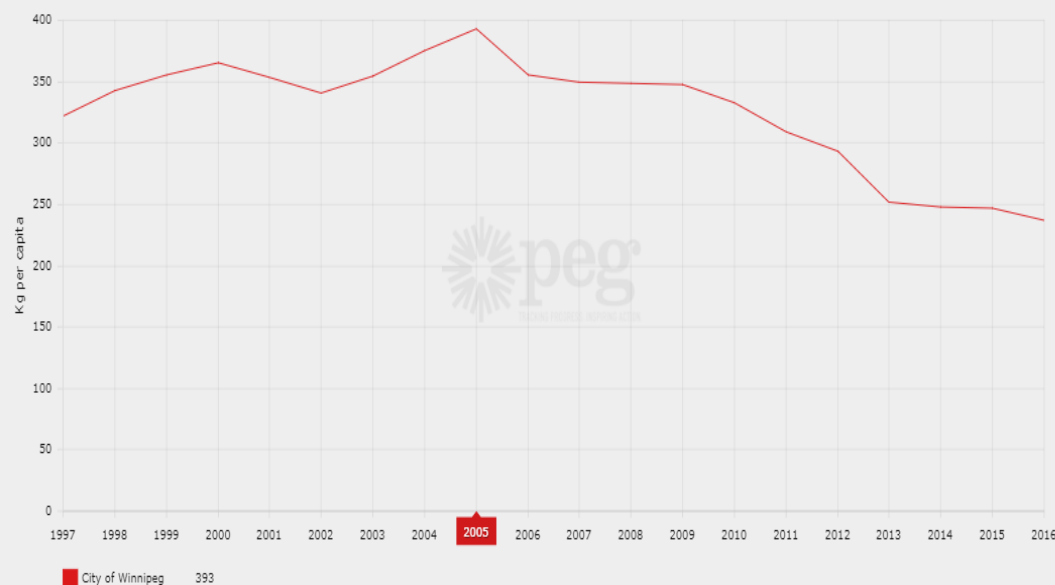


Indicator
Waste

Waste measures the amount of stuff that ends up in a landfill or is diverted to a recycling facility. The graphs show the average number of kilograms per person over a year.

RELATED DATA

Residential waste going to the landfill



Data source

The data for this indicator are collected by Statistics Canada for each census year. Recent data can be accessed at: <http://www2.statcan.gc.ca/census-recensement/index-eng.cfm>

The most recent data for this indicator was made available in 2015. This data is updated for each census year, as the data becomes available.

Rationale and Connections

Educational attainment is an important indicator of the knowledge, skills, and competencies individuals have that allow them to participate effectively in society and the economy. Highly educated individuals tend to be less prone to unemployment and have significantly higher lifetime earnings through income (Organisation for Economic Co-operation and Development (OECD), 2011a). Studies have shown that educational attainment has an impact on many aspects of well-being, with higher education related to longer lives, greater participation in politics and the community, and lower crime (OECD, 2011a). Consequently, educational attainment provides a good indicator of individual well-being as well as whether students are being adequately prepared to meet the demands of the labour market.

Educational attainment is closely connected to the economy and basic needs, and is commonly used as a proxy measure for the skills available in the population and the labour force (OECD, 2011b).

With respect to basic needs, individuals with higher education levels tend to be less prone to unemployment and have significantly higher lifetime earnings from income (OECD, 2011a). Consequently, individuals with higher education levels are in a much better position to provide for the basic needs of themselves and their families.

Educational attainment also links to health. Social determinants of health research indicates that educational attainment contributes to longer and healthier lives (Ross & Wu, 1996; Lleras-Muney, 2005). Part of this relationship links to behaviours associated with higher education: "The well-educated are less likely to smoke, are more likely to exercise, to get health check-ups, and to drink moderately" (Ross & Wu, 1995).

Measurement and Limitations

Educational attainment is measured as the highest level of formal education completed by individuals 25 and over. There are five levels of educational attainment measured: no certificate or diploma, a secondary school diploma or equivalent; a registered apprenticeship or other trades certificate or diploma; a college, CEGEP, or other non-university certificate or diploma; and a university degree, certificate, or diploma.

This indicator only takes into account the highest level of education completed.

References

Aghion, P., & Howitt, P. (1998). *Endogenous growth theory*. Cambridge, MA: Massachusetts Institute of Technology.

Braunerhjelm, P., Acs, Z., Audretsch, D., & Carlsson, B. (2009). The missing link: Knowledge diffusion and entrepreneurship in endogenous growth. *Small Business Economics*, 34(2), 105-25.

Lleras-Muney, A. (1995). The relationship between education and adult mortality in the United States. *Review of Economic Studies*, 72, 189-221.

Organisation for Economic Co-operation and Development (OECD). (2011a). *Compendium of OECD well-being indicators*. Retrieved from: <http://www.oecd.org/dataoecd/4/31/47917288.pdf>

Organisation for Economic Co-operation and Development (OECD). (2011b). *Education at a Glance 2011: OECD Indicators*. Retrieved from: <http://www.oecd.org/dataoecd/6/12/48631482.pdf>

Ross, Catherine E. & Chia-ling Wu. (1995). The links between education and health. *American Sociological Review*, 60, 719-45.

Ross, C.E. & C-L.Wu. 1996. Education, age and the cumulative advantage in health. *Journal of Health and Social Behavior*, 37(1), 104-120.

Statistics Canada. (2006). *Census guide 2R*. Retrieved from http://www2.statcan.gc.ca/census-recensement/2006/ref/pdf/2901_D14_T1_V1-eng.pdf



Indicator

Educational Attainment

Educational Attainment measures the highest level of formal schooling community members have completed.

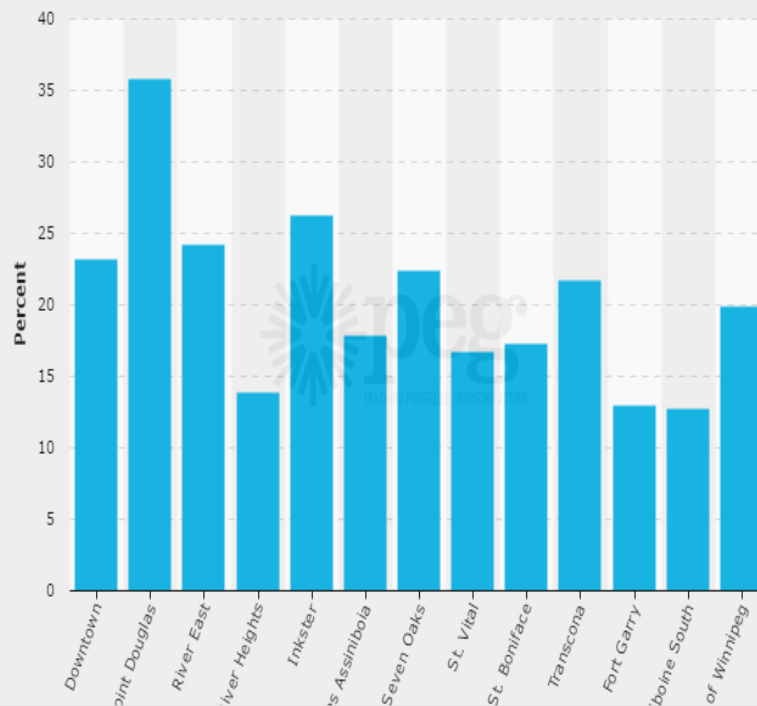
RELATED DATA

No certificate

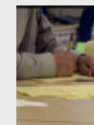
High school or equivalent

Bachelor or higher

Highest level of schooling completed: No high school certificate (2011)



RELATED CONTENT



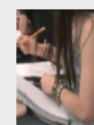
Educational Attainment

▶ Video



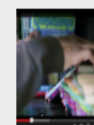
Inter

▶



Grad

▶



Edu

▶

MORE INFORMATION

Data source

The data for this indicator are collected by Statistics Canada for each census year. Recent data can be accessed at: <http://www12.statcan.gc.ca/census-recensement/index-eng.cfm>

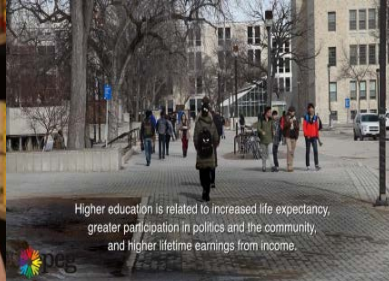
Rationale and Connections

Educational attainment is an important indicator of the knowledge, skills, and competencies individuals have that

Map and Figures

12 WINNIPEG COMMUNITY AREAS
The data in this report, as well as in Peg is organized around Winnipeg's 12 community areas and the 25 neighbourhood clusters within them. These boundaries are used by the City of Winnipeg, Province of Manitoba, and the Winnipeg Regional Health Authority.





Higher education is related to increased life expectancy, greater participation in politics and the community, and higher lifetime earnings from income.



82% of students in Winnipeg graduate within 6 years of starting grade 9
This is up from a rate of 76% in 2001/02



Community gardens create an environment in which community members can interact and share knowledge.



In 2012, arts and cultural events attracted 2,774,000 attendees.



I got married and then we came to Canada right away.



Youth Parliament of Manitoba is one way that youth learn how our laws are made and how to get involved.



8% of Winnipeggers walk or ride to work

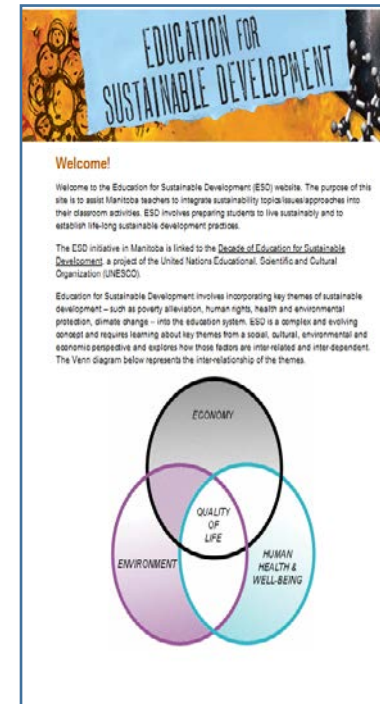
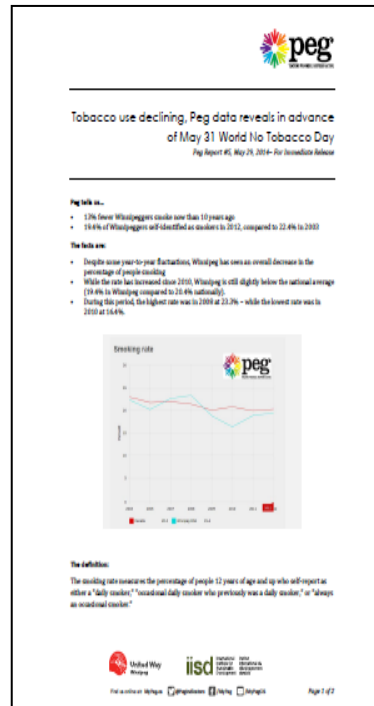


In 2010, approximately 1/3 of Winnipeggers said they knew many of their neighbours.



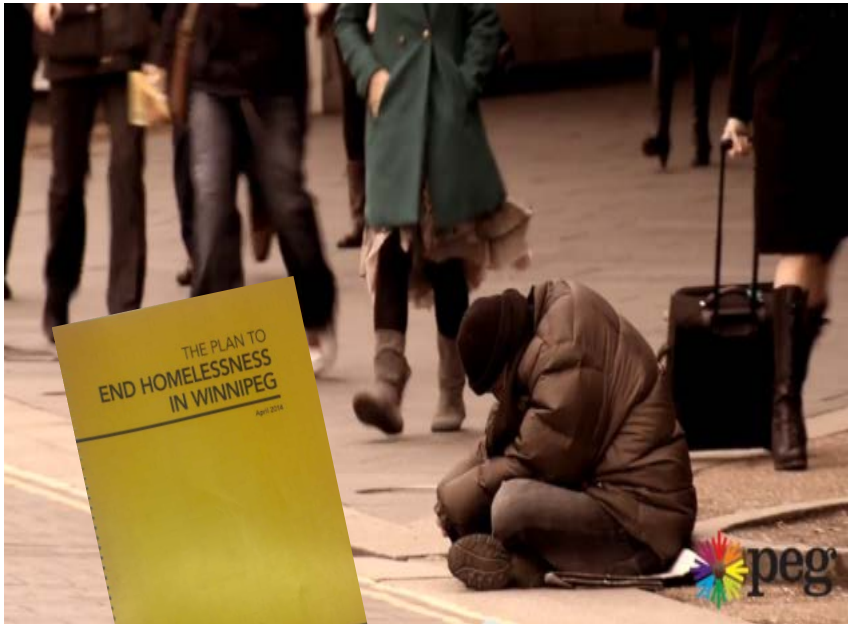
22% of downtown residents walk or bike to work as their primary mode of transportation, compared to 6% of Winnipeggers overall.

Community Infrastructure

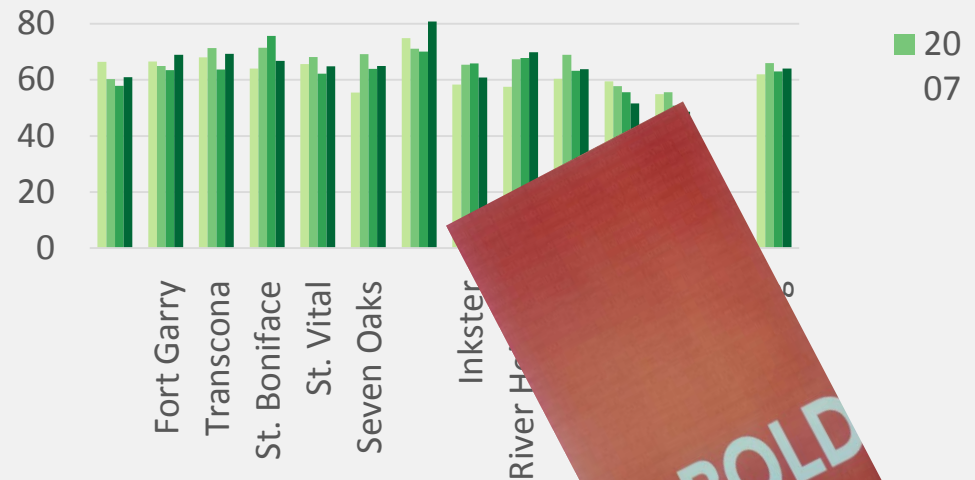


Annual special reports Timely indicator sheets Curriculum

Collective Impact Initiatives



Readiness for school (2006 - 2011): % of children at age 5 very ready for school in one or more EDI category





mypeg.ca



@PegIndicators



<https://www.facebook.com/mypeg/>

Peg Community Profiles

Indicator	Point Douglas	River Heights	Assiniboine South	City of Winnipeg
Median household income (before tax)	\$39,614.00	\$55,372.00	\$81,462.00	\$57,925.00
Dwelling- needs major repairs	16.9%	11.1%	5.5%	8.5%
Children in Care	17.0%	1.6%	1.1%	2.6%
Transportation	6.3% active, 21.6% public, 71.1% car	12.8% active, 16.6% public, 69.3% car	4.1% active, 7.9% public, 86.5% car	7.6% active, 14.6% public, 76.4% car
Educational attainment	35.6% No certificate	36.4% bachelor +	29.7% bachelor+	28.6% High school
Life expectancy (m/f)	71.7/77.4	79.3/84.5	81.2/83.5	78.3/82.7
Diabetes rates	13.2%	7.5%	7.1%	9.2%
Mood and anxiety	27.4%	26.4%	24.6%	24.4%
Heart attack/stroke	5.8%/4.14%	3.5%/2.3%	3.0%/2.3%	3.8%/2.6%

Panel Discussion

Ryan Erb
My Perth-Huron
United Way





Social Research &
Planning Council



Beta version

myPerthHuron

Discovering the well-being
of our communities



United Way
Perth-Huron



myPerthHuron

Advisory Committee

Tracy Van Kalsbeek – Chair

Executive Director

Stratford Perth Community Foundation

David Blaney

Municipal Councillor

Huron East

Erica Clark – SRPC Co-chair

Epidemiologist

Huron County Health Unit

Susanna Reid

Director

Social Research & Planning Council

Ken Clarke

Data Analyst

Social Research & Planning Council

Don Cowan

Distinguished Professor Emeritus

University of Waterloo Computer
Systems Group

Kyle Young

Research Associate

University of Waterloo Computer
Systems Group

Ryan Erb

Executive Director

United Way Perth-Huron

Kathy Vassilakos – SRPC Co-Chair

Councillor

City of Stratford



Social Research &
Planning Council

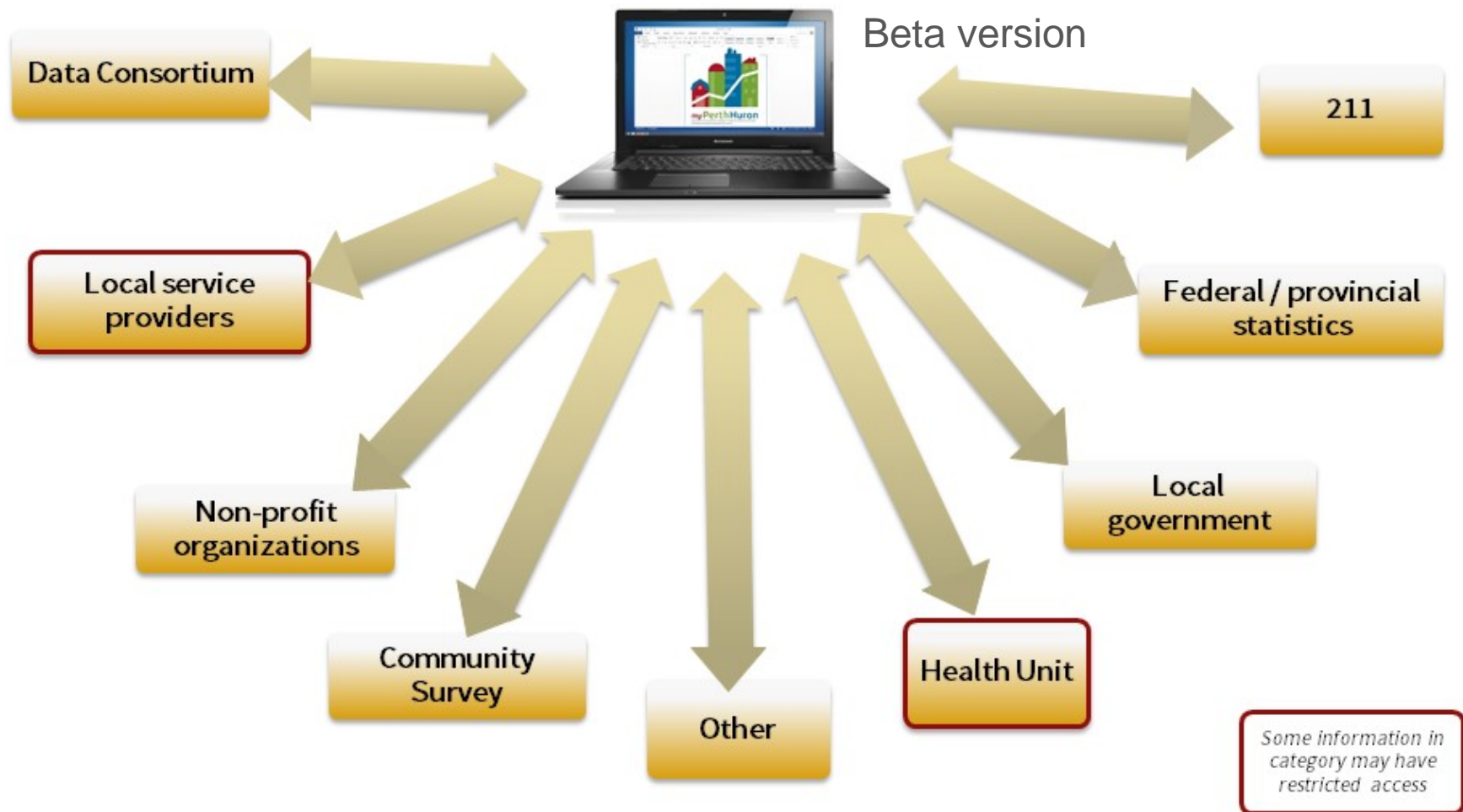
Computer
Systems
Group
University of Waterloo



Problem



Solution





Discovering the well-being of our communities

[Home](#) [About](#) [Indicators](#) [Data Sharing Organization](#) [Data Sets](#) [Resources](#) [Log On](#)

[PRINTABLE VERSION](#)

What is myPerthHuron

It is an online resource to help track the well-being of our communities, where we are doing well, where community challenges may be emerging and discovering what makes our community unique.

Discovering the general well-being of individuals and society, is defined in terms of health and happiness, rather than simply wealth. In many respects, quality of life indicators representing well-being are subjective. What is considered to be 'good' varies from individual-to-individual and community-to-community. But with these tools we will be able to discover the values in these indicators.



Data Sets Keyword Search

Keyword

Search

We'd like to hear from you.

The myPerthHuron initiative is currently in beta phase. We are looking for community feedback to help us improve the quality and usability of this data resource. [Send feedback.](#)

[Terms of Use](#) | [Privacy Policy](#)

Supported by



A Social Research & Planning Council Project.
© United Way Perth Huron Canada



Discovering the well-being of our communities

[Home](#) [About](#) [Indicators](#) [Data Sharing Organization](#) [Data Sets](#) [Resources](#) [Log On](#)

[PRINTABLE VERSION](#)

[Community Profile](#)
[Community Vitality](#)
[Democratic Engagement](#)
[Education](#)
[Environment](#)
[Healthy Populations](#)
[Housing & Homelessness](#)
[Leisure & Culture](#)
[Living Standards](#)
[Time Use](#)

Indicators

Indicator Selection

The base list of indicators have been based off the 2014 Quality of life report.

Sources of Information

Data has been pull from a variety of sources and where ever possible data for both Perth and Huron Counties including the town of St.Marys and the city of Stafford being represented at the lower tier level.

Data Limitations

Each domain includes a brief description and graphic illustration of the indicator data (i.e. what it measures? Why it matters? What the latest data says?). Inferences and conclusions, however, have purposely not been drawn.

We'd like to hear from you.

The myPerthHuron initiative is currently in beta phase. We are looking for community feedback to help us improve the quality and usability of this data resource. [Send feedback.](#)

[Terms of Use](#) | [Privacy Policy](#)
Supported by



A Social Research & Planning Council Project.
© United Way Perth Huron Canada

Beach Data

Context

The Huron County Health Unit tests the water for E. coli at public beaches in Huron County. Water is constantly moving at the beach so a single water sample does not do a good job of describing the water quality for the entire beach. There are five water samples taken at each beach on a testing day. The results from these five water samples are combined using the geomean calculation to give a composite result for the beach. See the Huron County Health Unit website for more information on the beach water quality testing.

Beach Data Search

Beach Name

- | | | |
|---|--|---|
| <input type="checkbox"/> Amberley Beach | <input type="checkbox"/> Black's Point | <input type="checkbox"/> Port Albert |
| <input type="checkbox"/> Ashfield Township Park Beach | <input checked="" type="checkbox"/> Goderich St. Christopher's Beach | <input type="checkbox"/> Port Albert R |
| <input type="checkbox"/> Ashfield Township Park Beach R | <input type="checkbox"/> Goderich Main | <input type="checkbox"/> Port Blake |
| <input type="checkbox"/> Bayfield | <input type="checkbox"/> Goderich Rotary Cove | <input type="checkbox"/> St. Joseph's Beach |
| <input type="checkbox"/> Bayfield Main | <input type="checkbox"/> Hay Township Park | <input type="checkbox"/> Sunset Beach |
| <input type="checkbox"/> Bayfield South | <input type="checkbox"/> Houston Heights | |

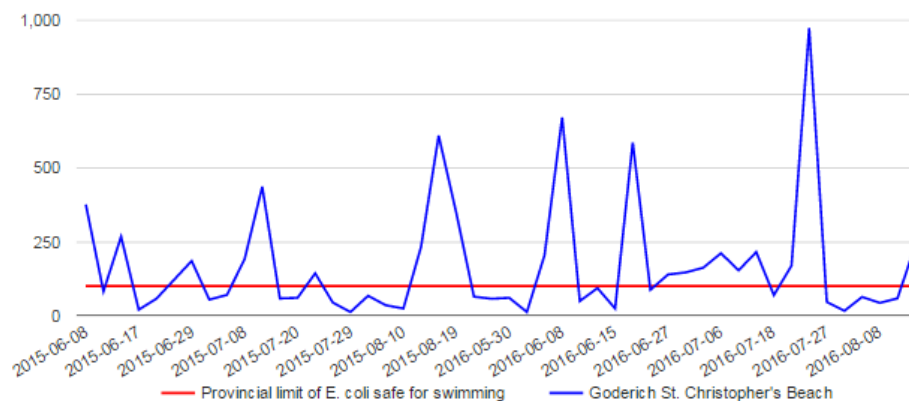
[Select All](#)

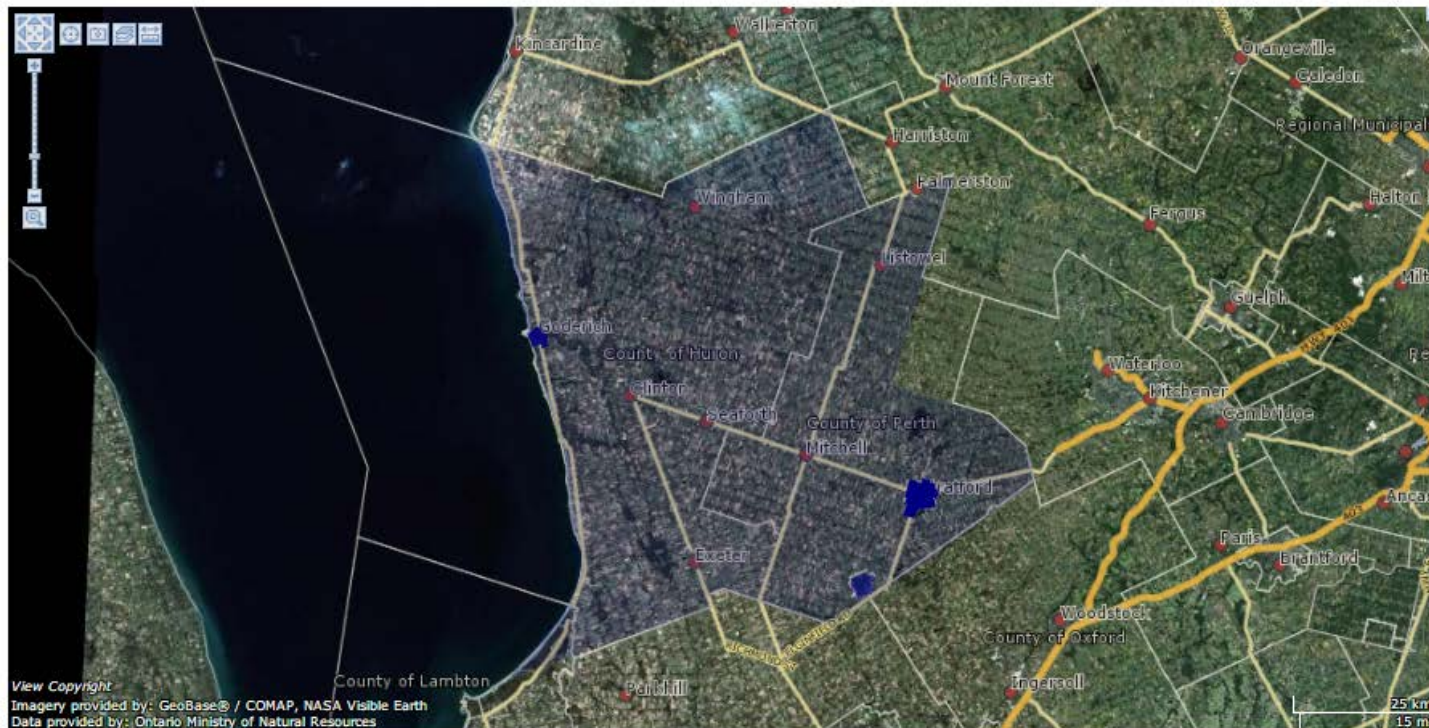
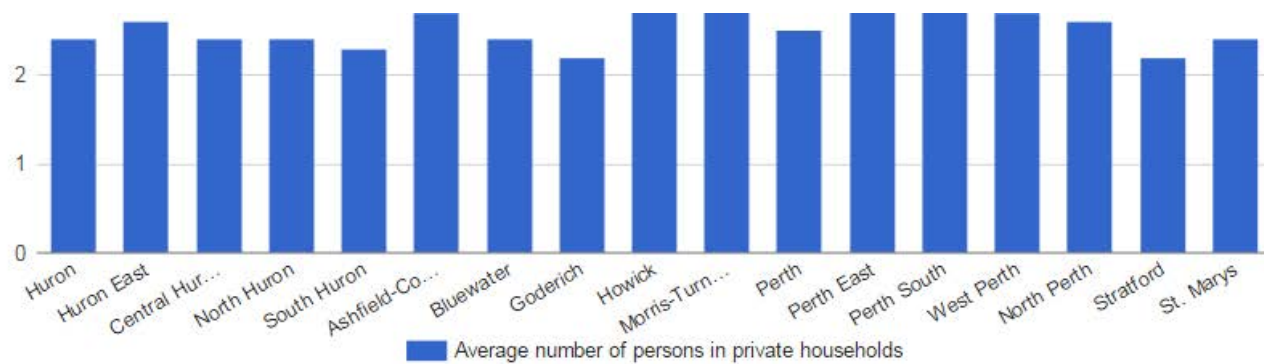
Year

- | | | |
|-------------------------------|-------------------------------|--|
| <input type="checkbox"/> 2000 | <input type="checkbox"/> 2006 | <input type="checkbox"/> 2012 |
| <input type="checkbox"/> 2001 | <input type="checkbox"/> 2007 | <input type="checkbox"/> 2013 |
| <input type="checkbox"/> 2002 | <input type="checkbox"/> 2008 | <input type="checkbox"/> 2014 |
| <input type="checkbox"/> 2003 | <input type="checkbox"/> 2009 | <input checked="" type="checkbox"/> 2015 |
| <input type="checkbox"/> 2004 | <input type="checkbox"/> 2010 | <input checked="" type="checkbox"/> 2016 |
| <input type="checkbox"/> 2005 | <input type="checkbox"/> 2011 | |

[Select All](#)

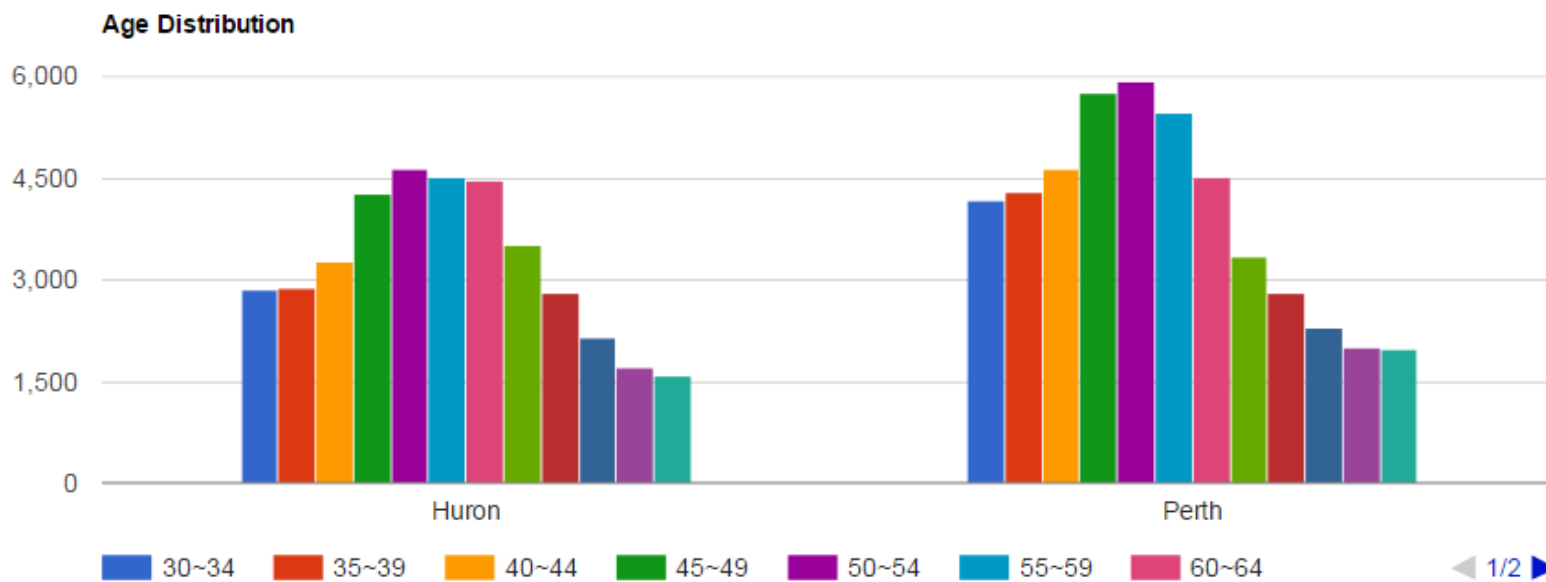
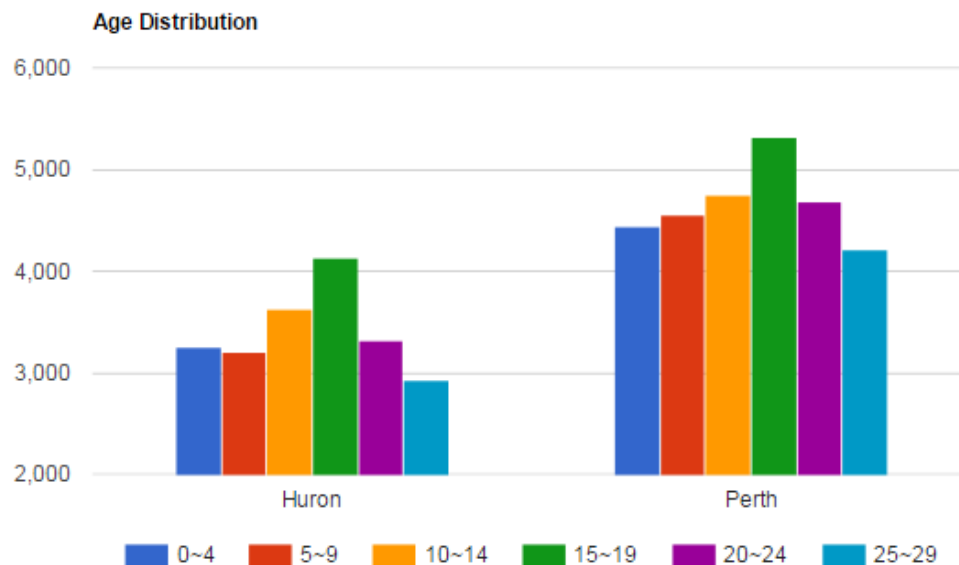
Sample Geo Mean





Displaying Entries 1 to 17 of 17

Location	Average number of people per hectare	Average number of residential dwellings per hectare	Average number of persons in private households
Huron	0.174	0.0825	2.4
Huron East	0.138	0.0562	2.6
Central Huron	0.169	0.089	2.4





Discovering the well-being of our communities

[Home](#) [About](#) [Indicators](#) [Data Sharing Organization](#) [Data Sets](#) [Resources](#) [Log On](#)

[PRINTABLE VERSION](#)

Huron County Health Unit

The Huron County Health Unit staff work to promote and protect health and prevent disease, illness and injury in the residents of Huron County. We offer public health services that meet our needs in Huron County.

Data Sets:

- Beach Water Quality
- Premise Data

We'd like to hear from you.

The myPerthHuron initiative is currently in beta phase. We are looking for community feedback to help us improve the quality and usability of this data resource. [Send feedback.](#)

[Terms of Use](#) | [Privacy Policy](#)

Supported by



ONTARIO CANADA



A Social Research & Planning Council Project.
© United Way Perth Huron Canada

Displaying Entries 1 to 50 of 416²⁴

Characteristics	Total	Male	Female	Year	Location	Note
Total population by age groups	12630	6255	6380	2011	North Perth	4
0 to 4 years	870	405	465	2011	North Perth	
5 to 9 years	820	430	390	2011	North Perth	
10 to 14 years	805	435	370	2011	North Perth	
15 to 19 years	895	450	450	2011	North Perth	
15 years	180	100	80	2011	North Perth	
16 years	180	85	100	2011	North Perth	
17 years	160	75	85	2011	North Perth	
18 years	180	85	95	2011	North Perth	
19 years	195	105	90	2011	North Perth	
20 to 24 years	795	410	390	2011	North Perth	
25 to 29 years	810	410	395	2011	North Perth	
30 to 34 years	780	380	395	2011	North Perth	
35 to 39 years	720	370	350	2011	North Perth	
40 to 44 years	700	365	330	2011	North Perth	
45 to 49 years	885	420	465	2011	North Perth	
50 to 54 years	940	465	475	2011	North Perth	
55 to 59 years	840	445	400	2011	North Perth	
60 to 64 years	690	350	340	2011	North Perth	
65 to 69 years	530	255	275	2011	North Perth	
70 to 74 years	500	240	260	2011	North Perth	
75 to 79 years	415	195	225	2011	North Perth	
80 to 84 years	345	135	210	2011	North Perth	
85 years and over	290	105	185	2011	North Perth	
Median age of the population	38.9	37.9	39.8	2011	North Perth	5
% of the population aged 15 and over	80.2	79.7	80.8	2011	North Perth	
Total population by age groups	3995	2065	1930	2011	Perth South	4
0 to 4 years	180	100	80	2011	Perth South	
5 to 9 years	235	120	110	2011	Perth South	
10 to 14 years	300	155	150	2011	Perth South	
15 to 19 years	350	170	180	2011	Perth South	
15 years	65	40	30	2011	Perth South	
16 years	80	45	35	2011	Perth South	
17 years	65	30	35	2011	Perth South	
18 years	65	25	40	2011	Perth South	
19 years	70	35	40	2011	Perth South	
20 to 24 years	285	155	135	2011	Perth South	
25 to 29 years	160	80	80	2011	Perth South	
30 to 34 years	185	95	85	2011	Perth South	

Lessons Learned

- Need for local community champions
- Governance
- Data owned by the SRPC, under conditions of agreement
- Privacy & Security
- Data reliability
- Sustainability plan

BEYOND REPORTS

Explore how to communicate and share data



BEYOND REPORTS

Explore how to communicate and share data

Break time

Please recycle and use green bin!



BEYOND REPORTS

Explore how to communicate and share data

Table discussions

- What key features would you like to see in order to improve access to data and information?
- What would be most useful to you and your organization?
- How can we successfully embed a 'data sharing mindset' into our community culture?
- What other questions or comments do you have?



BEYOND REPORTS

Explore how to communicate and share data

Any Ahas?

**Moments of sudden
realization, inspiration,
insight, recognition or
comprehension?**

Definition from the Merriam-Webster Dictionary



BEYOND REPORTS

Explore how to communicate and share data

Kevin Tuer

Managing Director
Canada's Open Data Exchange (ODX)
Vice President Strategic Initiatives
Communitech





Realizing the Economic Potential of Open Data under a Smart City Framework

Beyond Reports

December 8, 2017

A private-public partnership



- Connects those who need open data with those who have open data
- Develops tools to share data, provides training and networking opportunities
- Influences policy and standards



Government
of Canada

Gouvernement
du Canada

Demand-Driven Innovation

- Open data is about more than just ***transparency, accountability, and accessibility.***
- There is real economic value.
- It's time to focus on solutions!



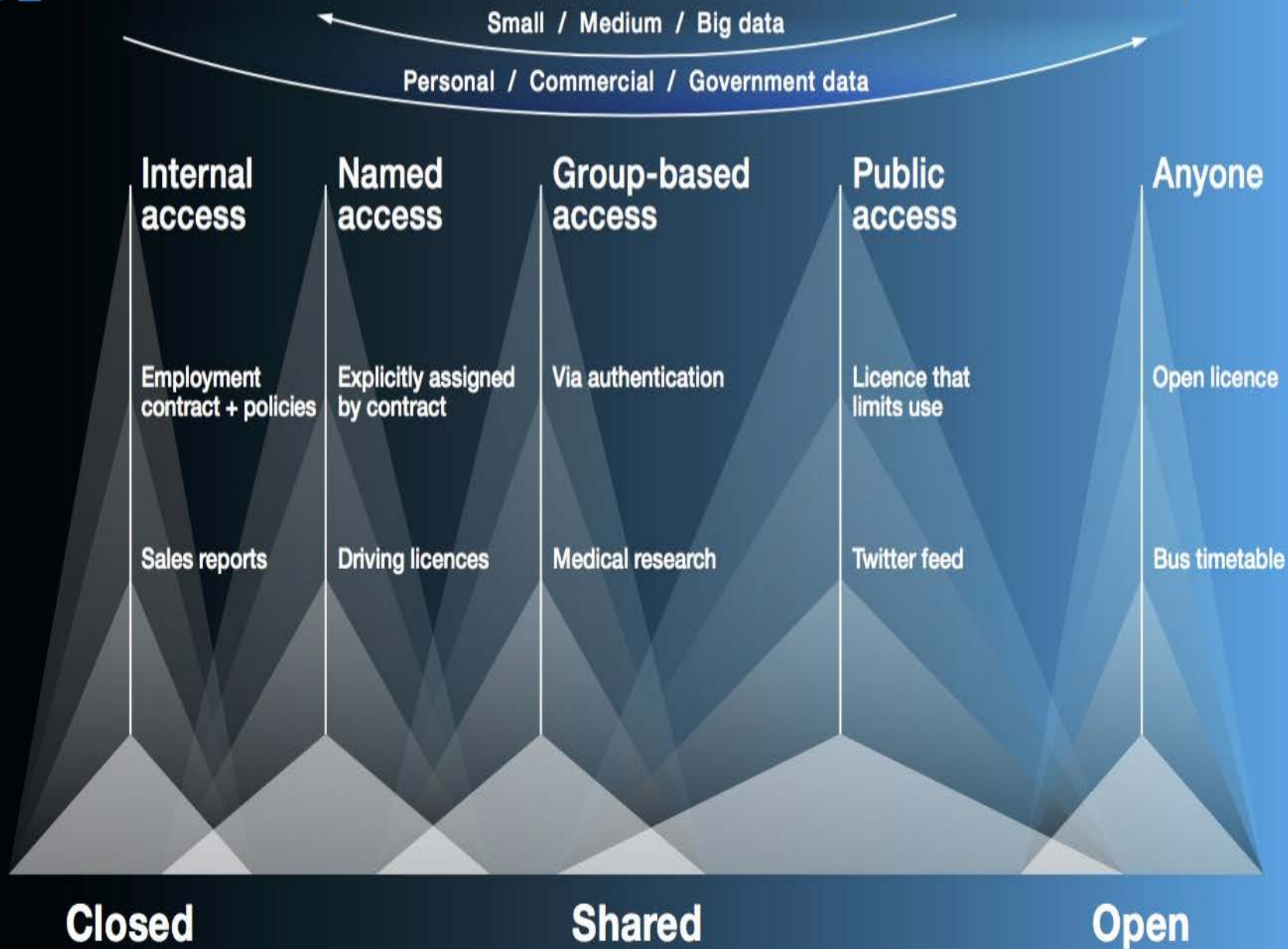
The world's most valuable resource is no longer oil, but data



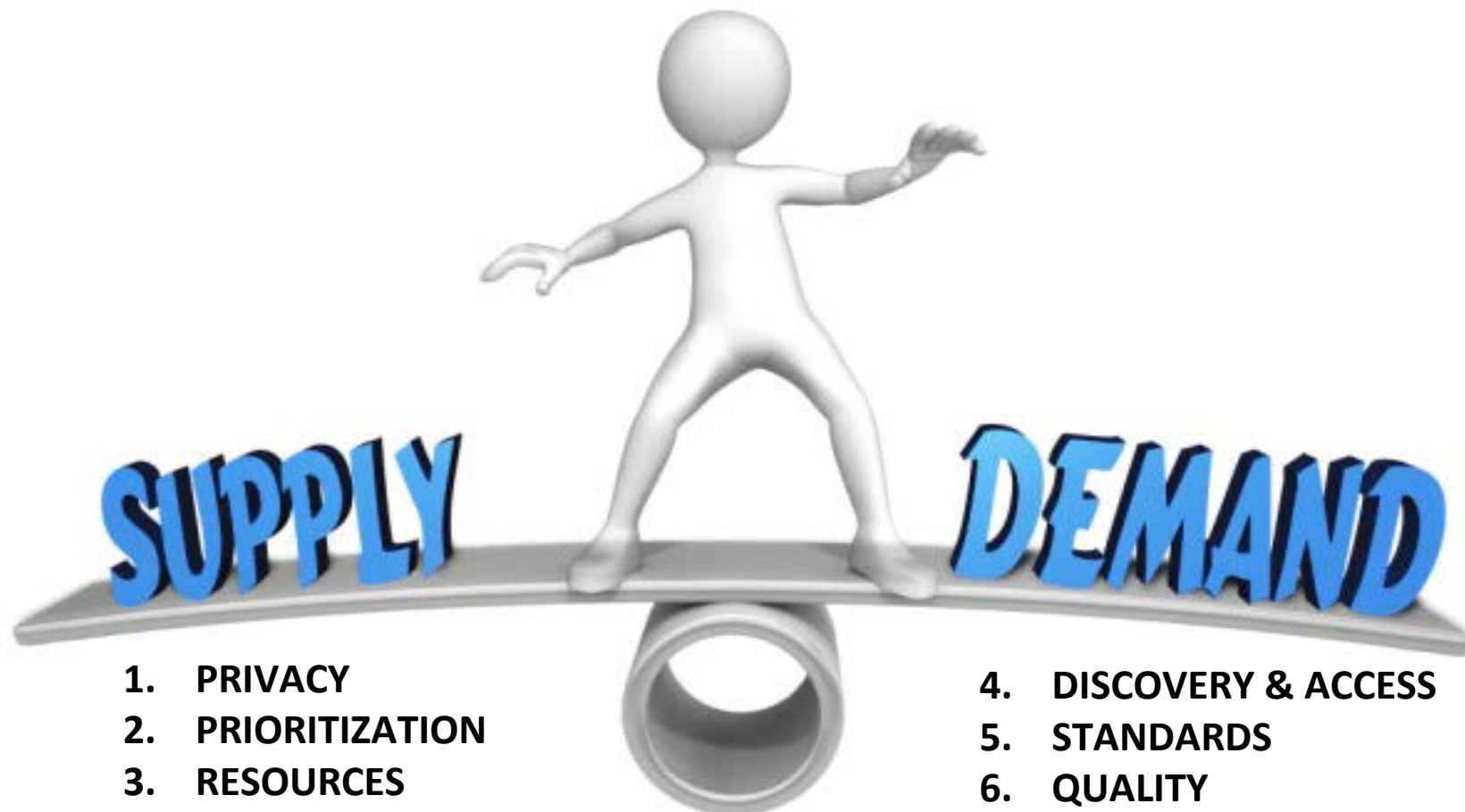
Print edition | Leaders >

May 6th 2017





Barriers to Mainstream Adoption



Extracting Value from Data



ODX Programs & Services that break these barriers



DISCOVER OPEN DATA

- Data Executive in Residence
- Data Concierge
- Workshops and webinars



EXPLORE THE MARKET

- OD150
- Open Cities Index
- CityOS 2.0



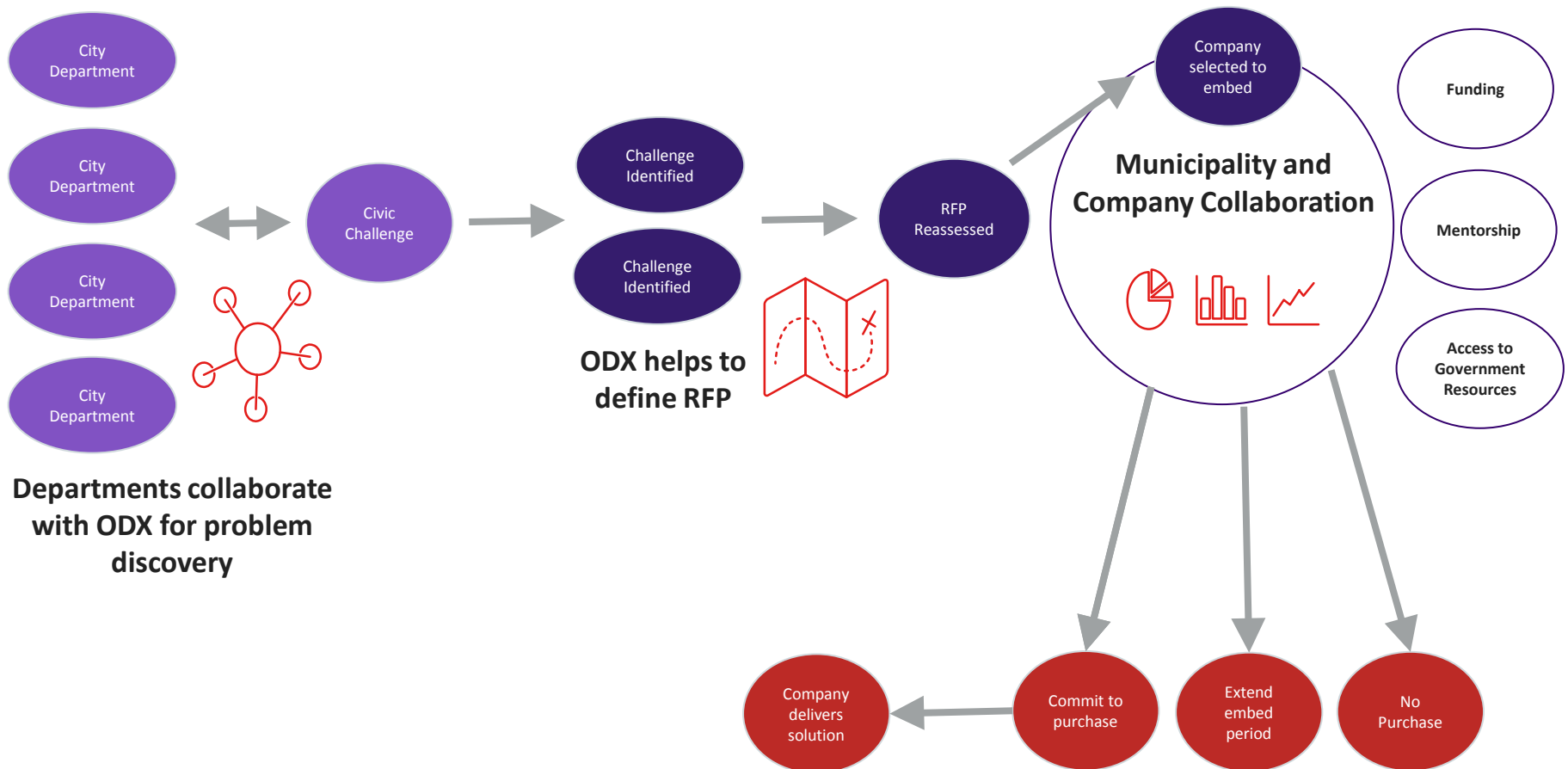
EXECUTE USING OPEN DATA

- ODX Civic Challenge
- ODX Ventures
- Liberate YOUR data

Problem Discovery

Problem Definition

Implementation



ODX Civic Challenge



How smart
is your city?



Benefits to the Municipality

- Expert help in defining one or more problems that can be solved with open data
- Access to early-stage companies from across Canada who could create new solutions to stated problem(s)



Ecosystem

- Leverage the power of data to improve the quality of life experienced by residents
- Enhance economic development
- Manage and use resources in an efficient manner



Benefits to Companies

- Business mentoring from local entrepreneurs
- Data strategy advice from ODX
- Access to data from the municipality



VENTURES

Accelerating Open Data-Driven Innovation

Cohort 1:

- Plasticity
- ThinkData Works
- Chillwall
- MapYourProperty
- Pitstop
- Fishbuoy
- Ecopia
- Peekapak

Cohort 2:

- Apply Board
- Borealis Wind
- Surgically Clean Air
- Flyte
- Focus 21
- Intellizence
- Knowledgehook
- Sherpa
- Tabnex
- Ukko Agro

ODX Cross Canada Tour

ATLANTIC



- Moncton, NB
- Charlottetown, PEI
- Halifax, NS

CENTRAL



- Ottawa, ON
- Montreal, QC
- Toronto, ON
- Waterloo / Kitchener, ON

WESTERN



- Winnipeg, MB
- Edmonton, AB
- Strathcona County, AB
- Calgary, AB
- Vancouver, BC

ODX Cross Canada Tour

“Give me your data!”

- Private Sector

“What data do you want?”

- Government

“Well, what do you have..?”

- Private Sector

- **Key Takeaways:**

- Start-ups and SMEs **want** to work with government
- **Feedback mechanisms** are important to give start-ups a voice
- Do not be afraid of an open **culture!**

Open Data Blueprint



Recommendations for Government:

1. Launch a data inventory project.
2. Adopt a data evaluation process.
3. Allocate appropriate resources to open data initiatives.
4. Use business intelligence applications to build momentum.
5. Create an open data strategy.
6. Establish an advisory panel or working group.
7. Spend time communicating internally and leveraging champions.
8. Start with small, quick wins.
9. Communicate with external stakeholders and employ feedback mechanisms on your data portal.
10. Work with CDMN hubs in your region.

Bonus: A National Data Standard for Canada



CityOS 2.0

Smart Cities and CityOS 2.0

CityOS 2.0 is a **self assessment toolkit** to help municipalities identify their current situation, and provide prescriptive suggestions on how to improve to better align with data consumers.

To reap the benefits of Smart City initiatives you must first do two things:

1. Understand where your municipality **currently is**
2. Understand **what's next**

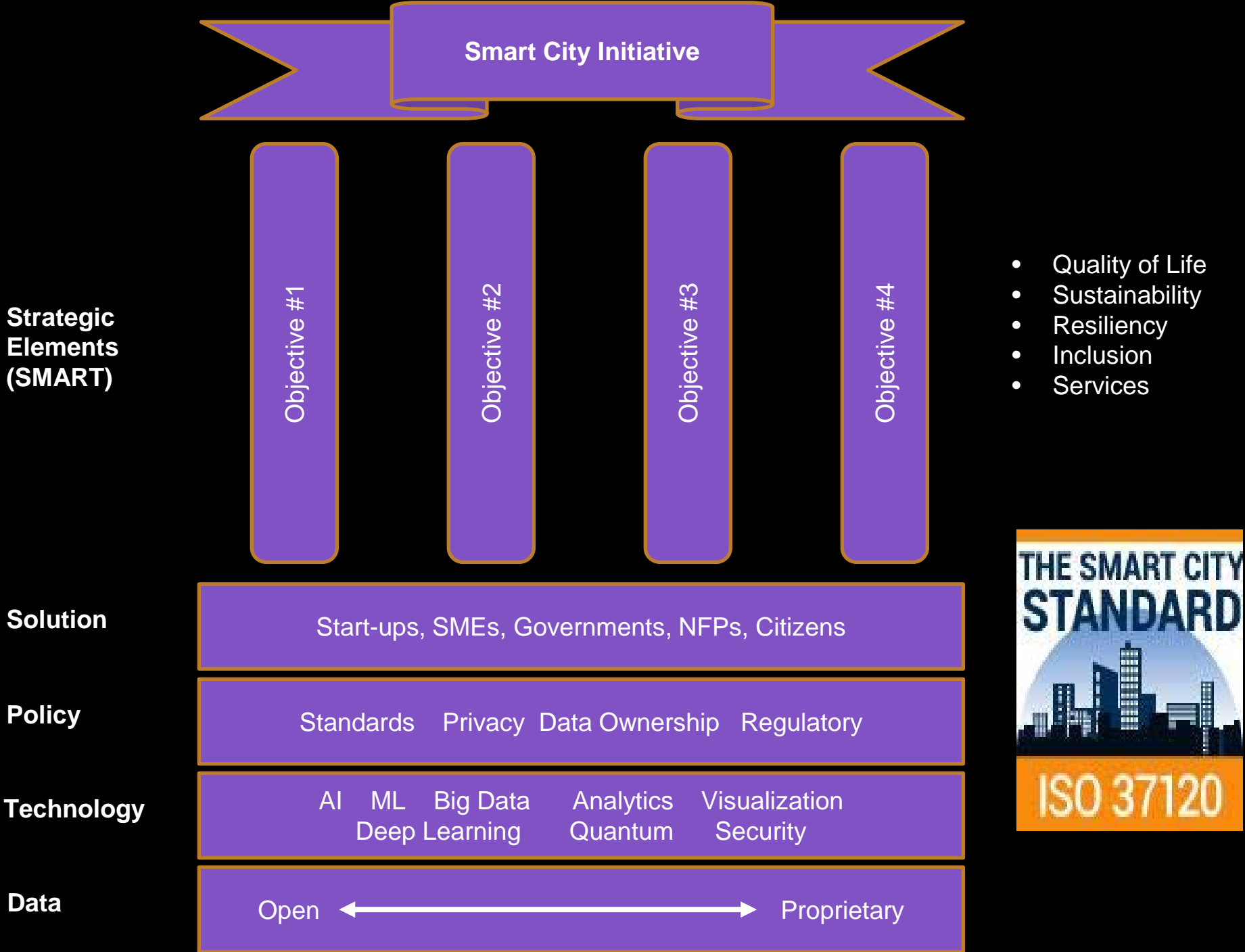
Model rests on five pillars:

1. Data Management
2. Resource Allocation
3. Strategy
4. Internal Ingenuity
5. Community Engagement

Role of Open Data in a Smart City Strategy

- **Quantify** behaviours, operations, problems
- **Benchmark** performance, internally and vs peers
- **Measure** the effectiveness of implemented solutions
- Create a **feedback channel** as part of a **continuous improvement program**

Evidenced-based decisions lead to better outcomes.





Kevin Tuer

kevin@codx.ca

@ktuer



Join the conversation at codx.ca



BEYOND REPORTS

Explore how to communicate and share data

Wrap up

- Complete a feedback form
- Leave your work mat at your table
- Power points from today's session will be made available on the Wellbeing Waterloo Region Website



BEYOND REPORTS

Explore how to communicate and share data

Thank you!

- To our speakers
- To the forum planning group
- To our tech team
- To our table hosts
- Data expo participants
- To you!!!!



BEYOND REPORTS

Explore how to communicate and share data

Thank you!

A word cloud featuring the phrase "thank you" in various languages and scripts, arranged in a circular pattern. The words include:

- danke (German)
- 謝謝 (Chinese)
- ngiyabonga (Xhosa)
- teşekkür ederim (Turkish)
- спасибо (Russian)
- dank je (Dutch)
- gracias (Spanish)
- tapadh leat (Irish Gaelic)
- moichchakkeram (Tamil)
- go raibh maith agat (Irish Gaelic)
- arigatō (Japanese)
- takk (Norwegian)
- dakujem (Slovak)
- merci (French)
- υχαριστώ (Greek)
- 감사합니다 (Korean)
- terima kasih (Indonesian)
- sukriya (Urdu)
- kop khun krap (Burmese)
- grazie (Italian)
- obrigado (Portuguese)
- bedankt (Dutch)
- dziękuję (Polish)
- hvala (Slovene)
- mauruuru (Fijian)
- sagolun (Yoruba)

